

# Metroplan Transportation Planning Structure and Process

WHITE PAPER  
Summary Briefing

# Federal Requirements of the MPO Structure

---

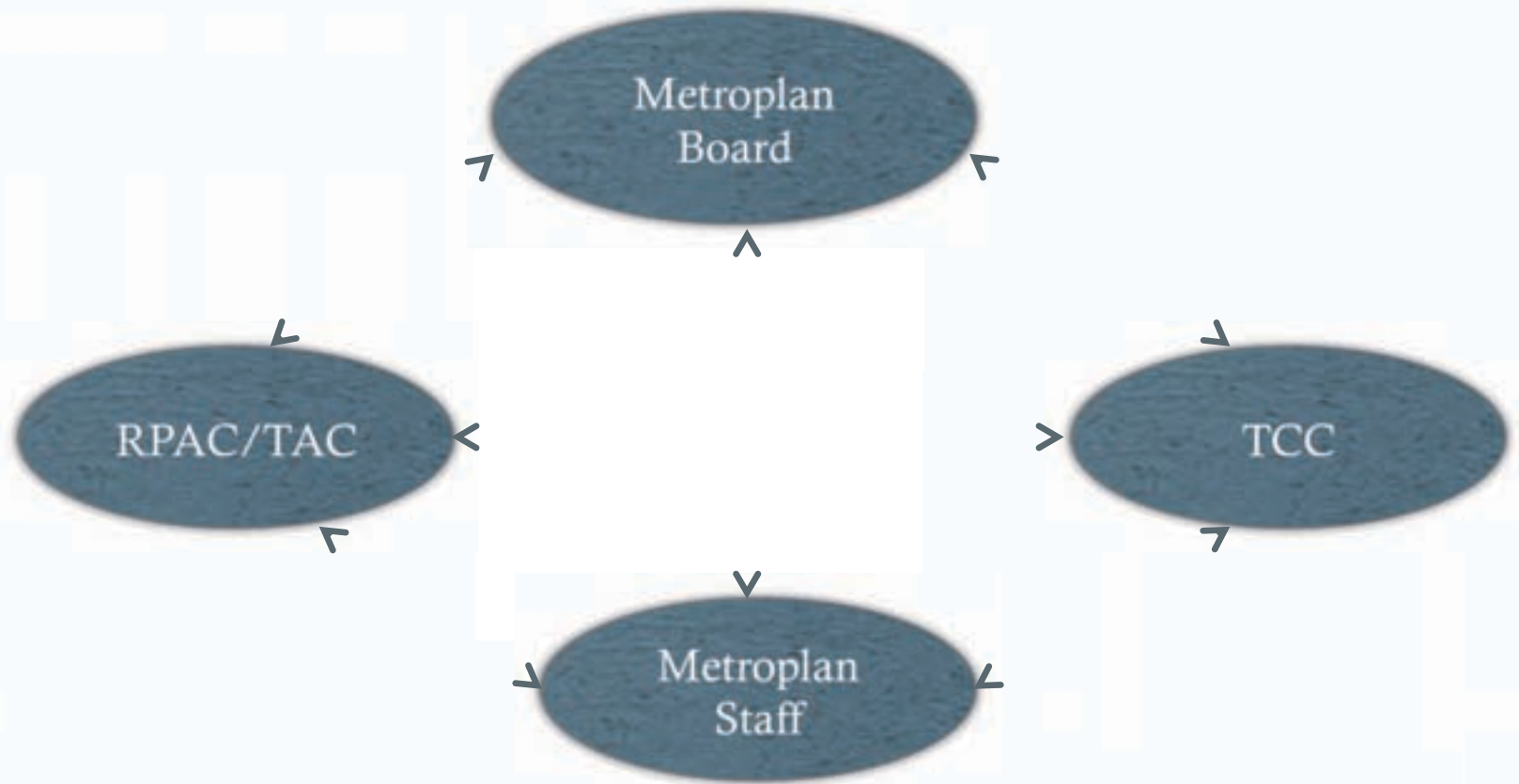
- Transportation Policy Board
  - Local elected officials
  - Officials of public agencies that administer or operate major modes of transportation
  - Appropriate state officials
- Fiscal Agent
- Meaningful Public Involvement
- **Internal Structure** - Federal statute leaves it up to each MPO on how to organize its proscribed work, leaving that internal structure (including advisory committees) up to the organization's by-laws and any applicable state law.

# Federal Requirements for MPO Products

---

- **Plans – External Documents**
  - 20 yr. fiscally constrained Long-Range Metropolitan Transportation Plan (LRMTP)
    - Performance Targets-- New
  - Transportation Improvement Program (TIP)
    - Annual List of Obligated Projects (ALOP)
- **Operational – Internal Documents**
  - Unified Planning Work Program (UPWP)
  - Public Participation Plan
  - Conformity Determination if violating NAAQS

# Internal Structure



# RPAC Appointments

---

- Metroplan structured to TAC to bring all of those interested parties together at a common table to actively participate in developing the transportation plan.
- Up to 50 members
  - 30 apportioned to members
  - ArDOT + Rock Region Metro
  - 18 recommended by staff to Executive Committee
  - All approved by the Board
  - No fixed terms of service

# TCC Appointments

---

- Technical Committee responsible for recommending action on products of the UPWP and CARTS TIP
- Membership
  - Each member jurisdiction has an appointment (usually public works or planner)
  - ArDOT and Rock Region Metro
  - LR Port and LR Airport
  - Non-voting
  - FHWA, FTA, LRAFB, UPRR, ADEQ and Energy Office

# Key Critique Process/ Structure Issues

---

- Disconnect:
  - RPAC Vs. Board of Directors
  - Vision vs. Practicality
- Lack of Implementation
  - Tools & “Know-How” to achieve to Vision
- Committees Structured Inadequately
  - Inadequate for Public Input
  - Inadequate for Implementation
- Lack of Influence
  - Lack of Influence Statewide
  - Lack of Influence into Local Communities

# Options for Structuring the Board

---

- No Change
- Stronger Executive Committee
- Limit Board to Larger Jurisdictions
- Expand the Board
- Small Cities Council
- Extend the President's Term



# Options for Restructuring Advisory Committees

---

- No Change
- Merge TCC and RPAC
- Repurpose Existing Committees
- New Committee Structure
- Fixed Terms for Committee Members
- Include More Local Officials on Committees

# Options for Adding Operational Duties

---

- Stand Up Regional Mobility Authority
- Become the Planning Department for Members on a Contract Basis