

2019 REGIONAL ECONOMIC INDICATORS

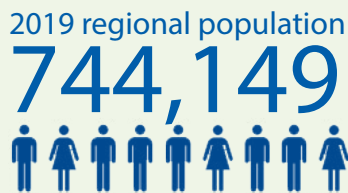
Little Rock–North Little Rock–Conway MSA (Central Arkansas)



Population Growth

Metroplan estimates that, by January 1, 2019, regional population had reached 744,149, 6.3 percent higher than its Census 2010 level of 699,757. Regional population growth averaged about 0.7 percent annually from 2010 to 2019, compared with U.S. population growth over the same period of 6.3 percent overall, roughly 0.7 percent annualized.

Source: Census 2010, Metroplan estimates, Census Bureau estimates.

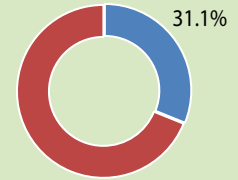


Education Levels

In 2017, 31.1 percent of Central Arkansas adults over age 25 held BA degrees or higher, slightly below the national average (32.0 percent). The region's rank was 135th out of 382 U.S. metros measured for this metric. In Pulaski County, 34.7 percent of population over age 25 held BA degrees or higher.

Source: Census Bureau, American Community Survey.

Percentage of Central Arkansas adults with BA degree or higher, 2017

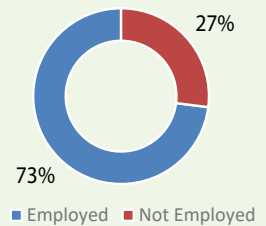


Job Market

In 2017, 72.6 percent of central Arkansas working-age adults (ages 20 to 64) were employed. This ranks the region 181st highest out of 382 U.S. metros. The region ranked 31st for employment as share of working-age adults, among the 54 mid-sized metro areas (population 500,000 to 1 million).

Source: Census Bureau, American Community Survey. Figures include armed forces employment.

Employment Participation 2017

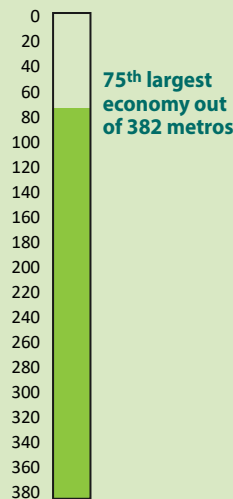


Gross Metro Product

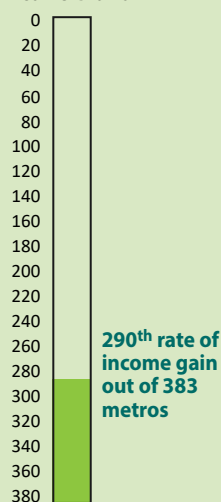
In 2017, the regional GDP was \$38.9 billion. Central Arkansas ranked as the nation's 75th largest metropolitan economy (out of 382 areas measured). From 2012 to 2017, Central Arkansas GDP grew by 1.5 percent, while U.S. metropolitan GDP grew 11.2 percent.

Source: U.S. Bureau of Economic Analysis. Figures for GDP are nominal; growth rates determined from chained 2009 dollars.

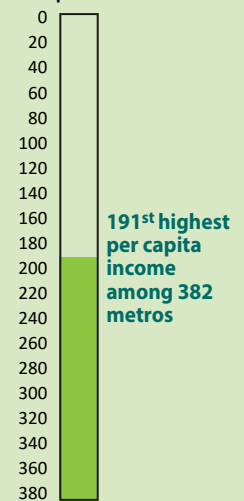
Gross Metro Product



Income Growth



Per Capita Income



Income Growth

From 2015 to 2017, local income per resident grew by 3.8 percent. This compares with a national average of 5.7 percent. The local area's rate of income gain ranked 290th of 383 U.S. metro areas. Among mid-sized U.S. metro areas (population 500,000 to 1 million), regional income gain ranked 45th out of 54.

Source: U.S. Bureau of Economic Analysis, rankings by Metroplan.

In 2017, residents of Central Arkansas had an average income of

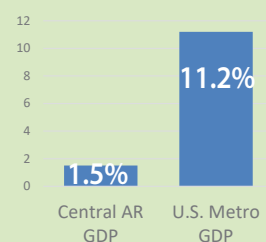
\$43,679

Per Capita Income

Income per resident was \$43,679 in 2017. This ranked central Arkansas 191st highest among 382 U.S. metro areas measured. Regional per capita income ranked 33rd out of 54 mid-sized U.S. metro areas (between 500,000 and 1 million population).

Source: U.S. Bureau of Economic Analysis, rankings by Metroplan.

GDP Growth 2012–2017



Vehicular Travel

In 2017, residents of the Little Rock Urbanized Area drove an average of 38.5 daily miles per capita. This ranks sixth among the top 100 largest U.S. urbanized areas (just behind Charlotte and ahead of Raleigh), and 53 percent higher than the 25.2-mile daily average figure for all U.S. urbanized areas.

Source: Federal Highway Administration, Highway Statistics 2017.

In 2017, residents drove an average of

38.5
miles per day



Average Daily Traffic

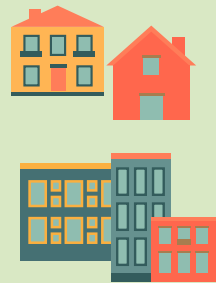
The Little Rock Urbanized Area had an average of 12,685 vehicles per day per lane of freeway in 2017. This compares with an average for U.S. urbanized areas of 14,568 vehicles per day.

Source: Federal Highway Administration, Highway Statistics 2017.

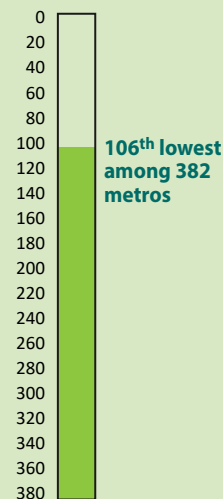
Housing Costs for Homeowners

Owner-occupied housing is less expensive in central Arkansas than in much of the rest of the country. In 2017, the median monthly housing cost for owners was \$1,163, ranking 106th lowest among 382 U.S. metro areas.¹ The region ranked 7th lowest among the 54 mid-sized metros (between 500,000 and 1 million population).

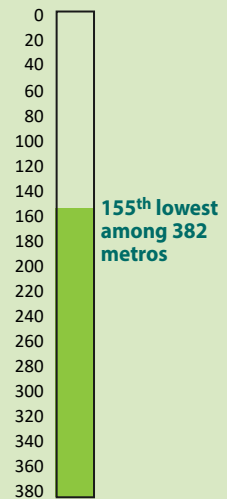
Source: Census Bureau, American Community Survey. Rankings by Metroplan.



Housing Costs for Homeowners



Housing Costs for Renters



¹ Note that the ACS data here represents median cost for homeowners, compared with "costs for homeowners with a mortgage" reported in previous editions. This reflects a change in ACS reporting.

Housing Costs for Renters

Median renter cost in the region in 2017 was \$811, ranking 155th lowest among 382 U.S. metro areas, and 14th lowest among the 54 mid-sized metros (between 500,000 and 1 million population). Source: Census Bureau,

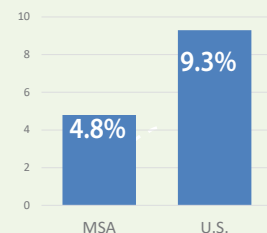
American Community Survey. Rankings by Metroplan.

Employment Change

In 2018, 361,200 persons were employed in the central Arkansas region. From 2013 to 2018, employment grew 4.8 percent in the Little Rock-North Little Rock-Conway MSA. Total U.S. jobs grew 9.3 percent in the same period. Source: U.S. Bureau of Labor Statistics, nonfarm payroll jobs series.



Employment Change 2013-2018



Unemployment

In July 2019, regional unemployment was 3.6 percent, compared with a U.S. rate of 3.7 percent. Source: U.S. Bureau of Labor Statistics, Arkansas Department of Workforce Services.

Unemployment 2017

