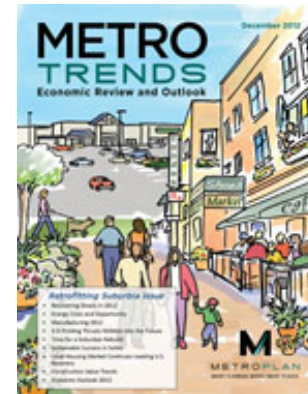


Looking Toward 2050

Little Rock – North Little Rock –
Conway Metro Area

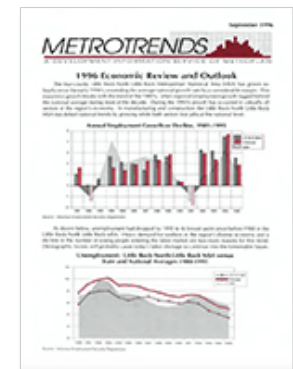
MetroTrends (twice yearly)

- Ongoing research into economics, demographics, transportation.....



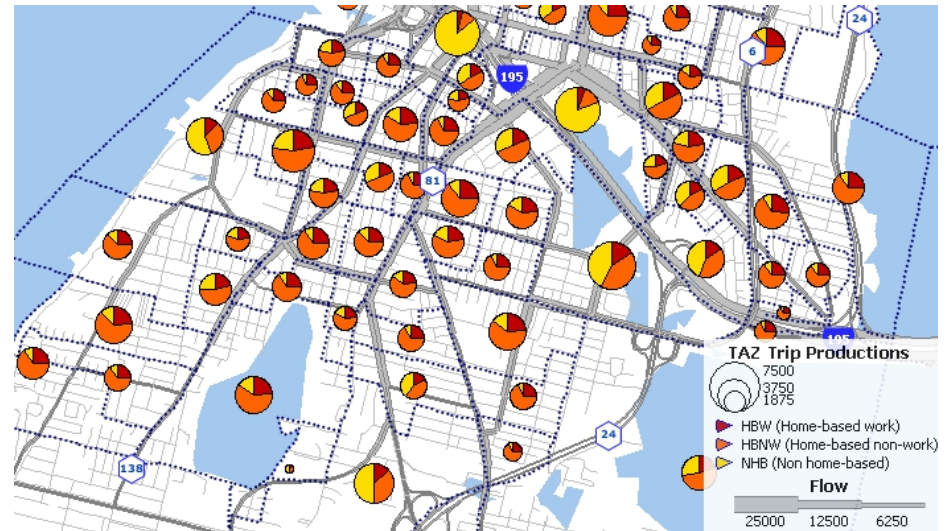
Reader feedback welcome!

- Questions
- Future topics?

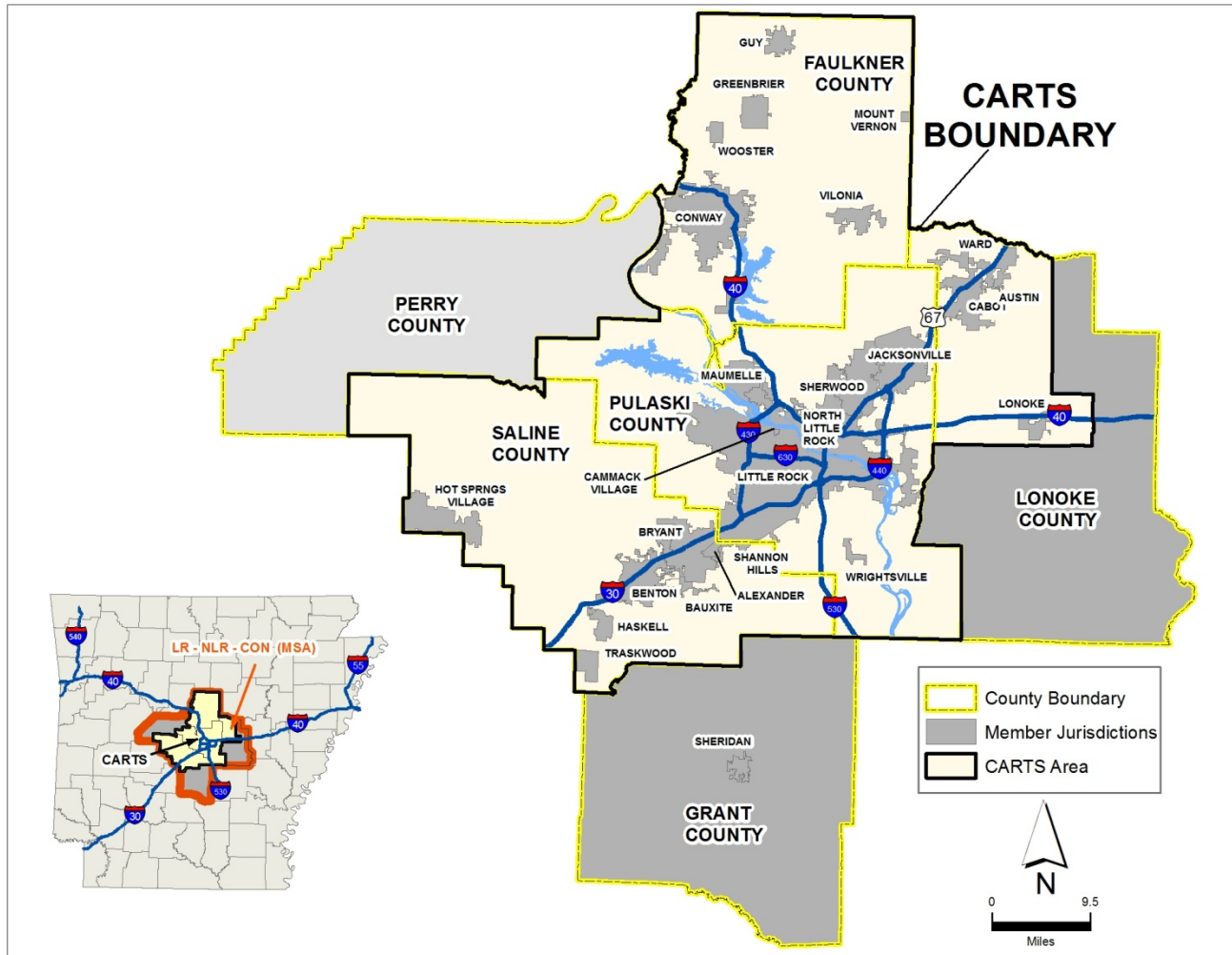


Why Projections?

- 1. Travel demand
- 2. Housing needs
- 3. Water supply
- 4. *Everything else...*



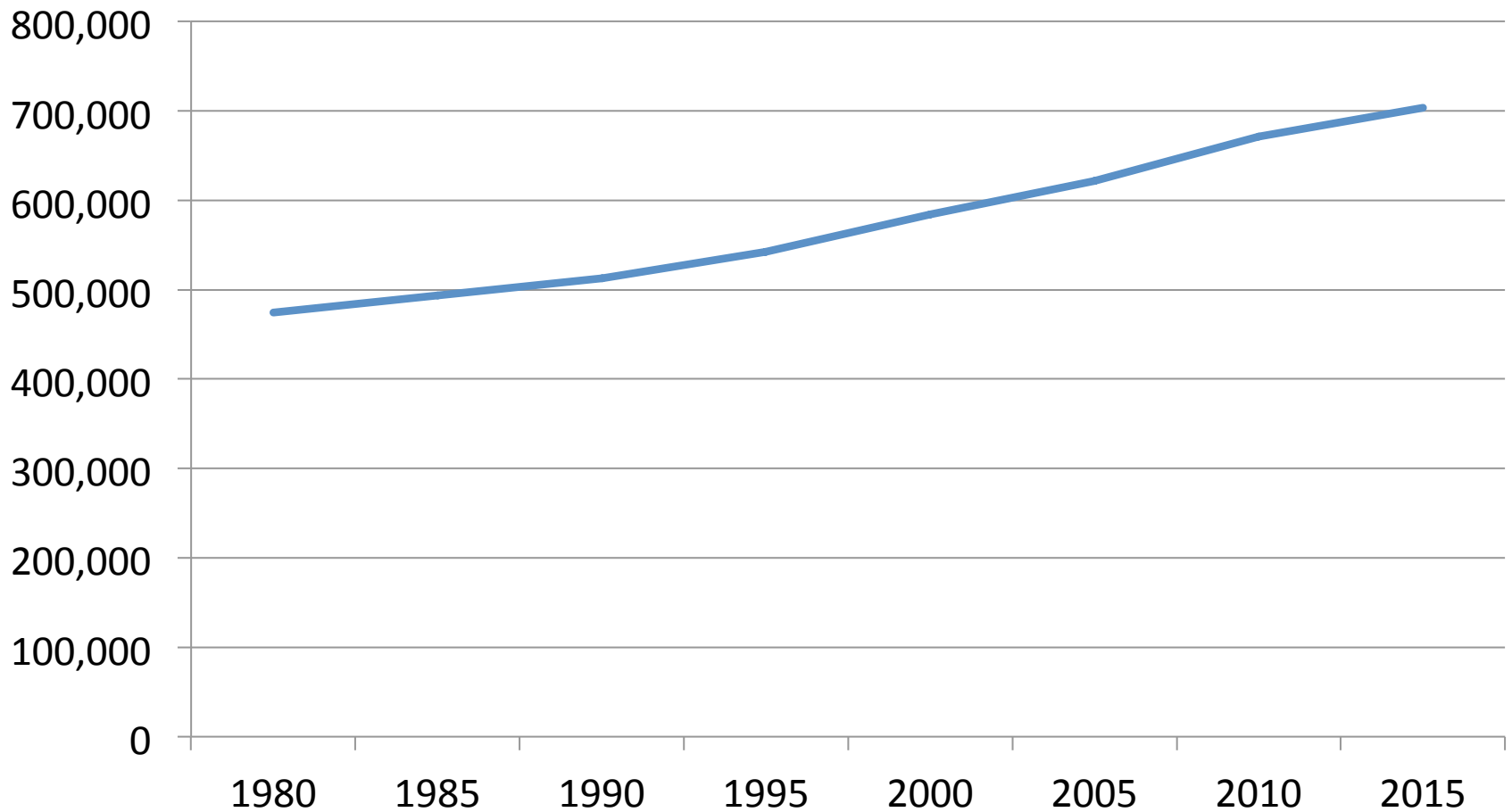
Four-County Area and CARTS



Background

- Projections to 2050 (about 30 years out)
- Attempt to foresee future needs, challenges
- We adjust every five years

Known Regional Population Trend 1980-2015

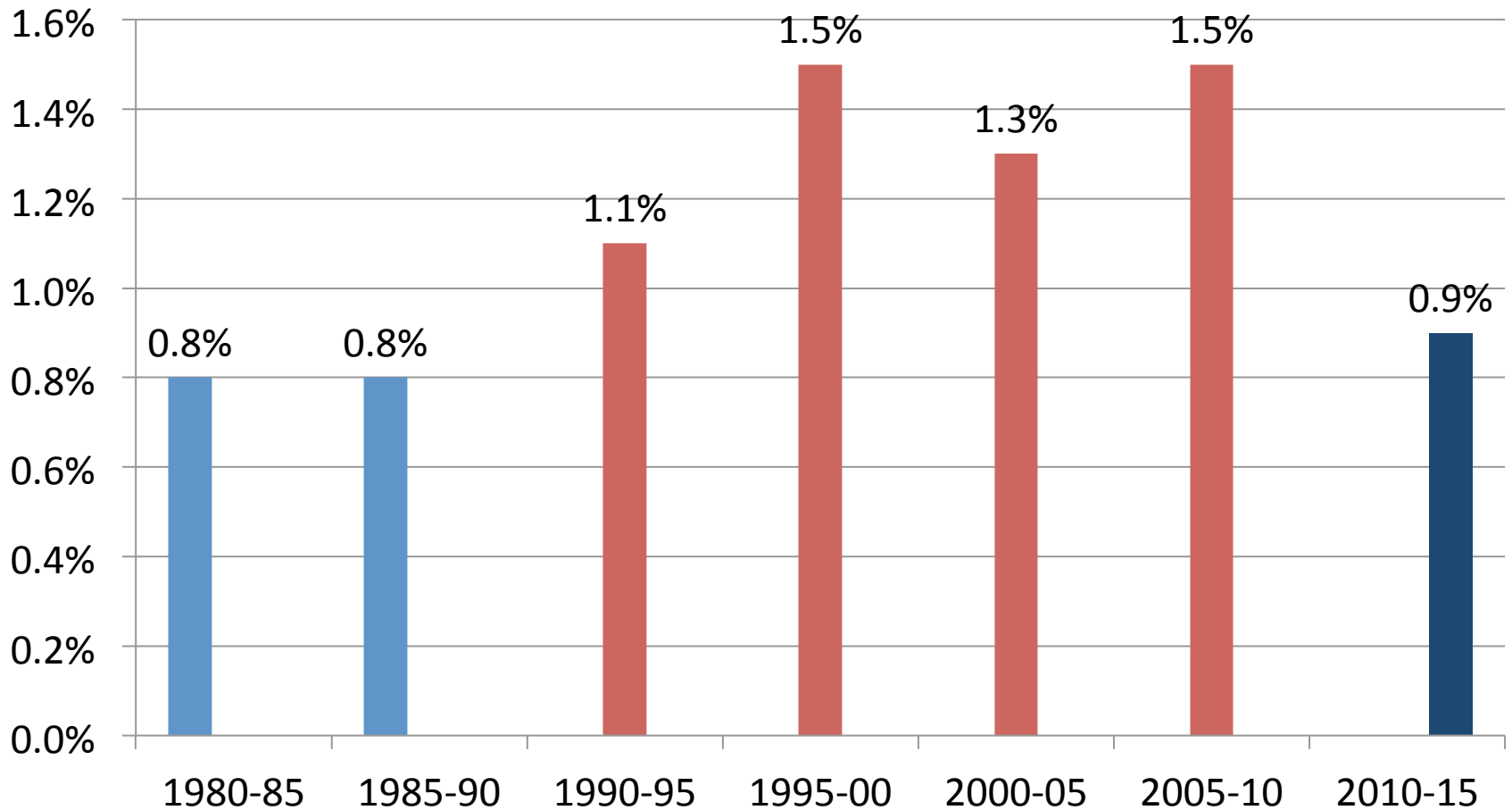


Trend 1980-2015

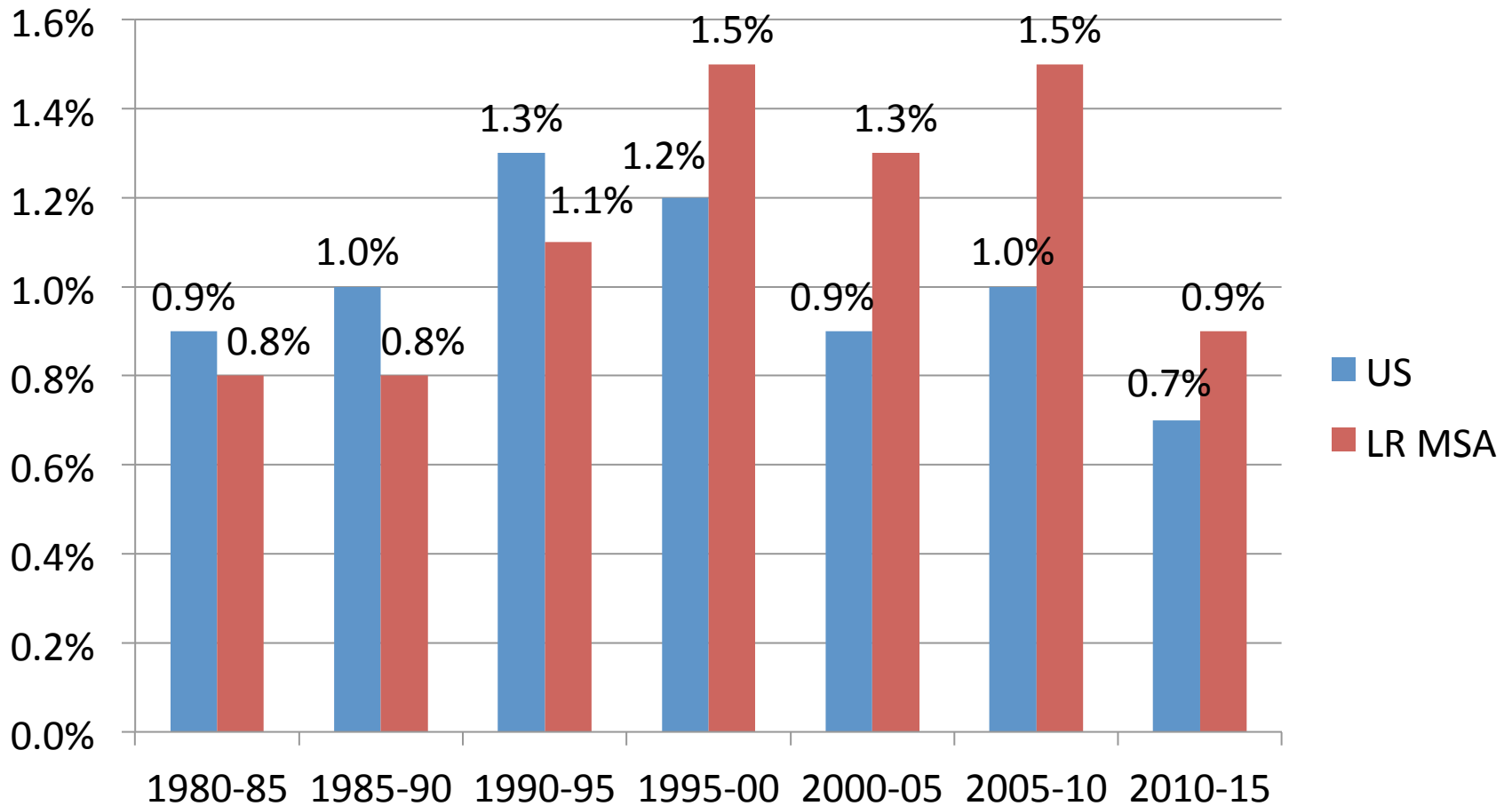
- Region grew at a moderate pace
- Slower than really fast-growing metros like Austin, NW Arkansas, and Nashville
- Above U.S. average during 2000-2010 decade

Annual Population Growth 1980-2015

(Five-Year Increments)

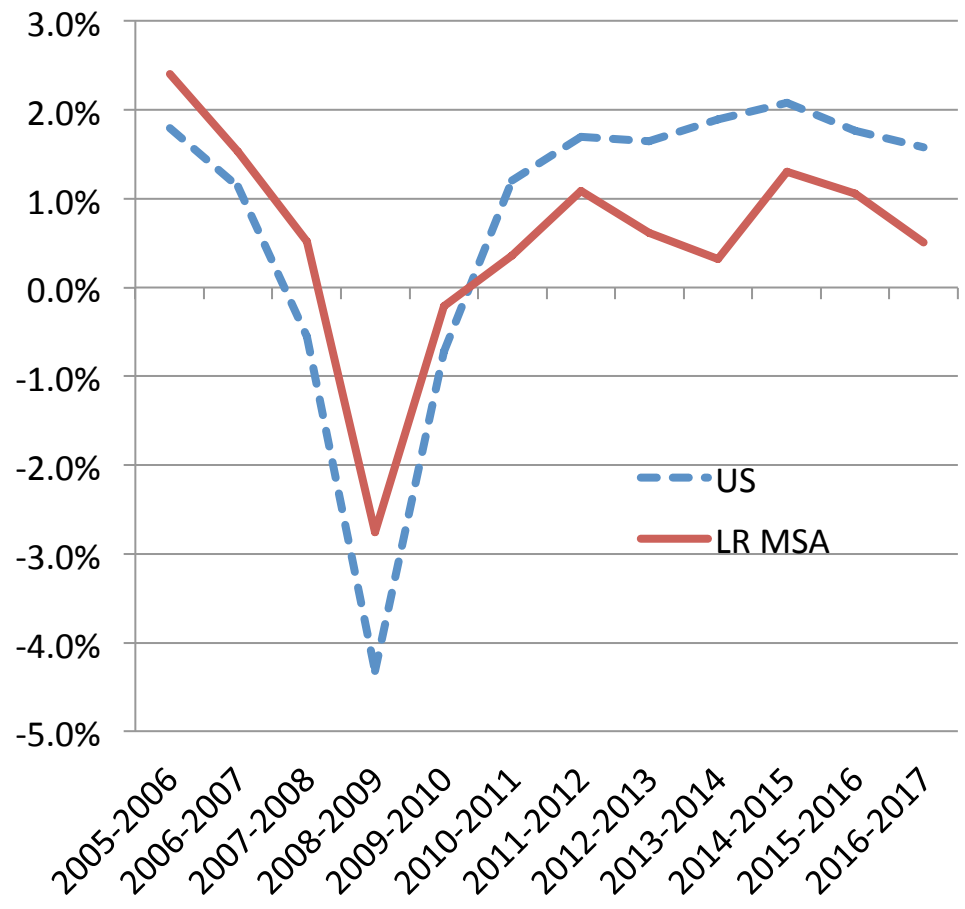


U.S. Comparison

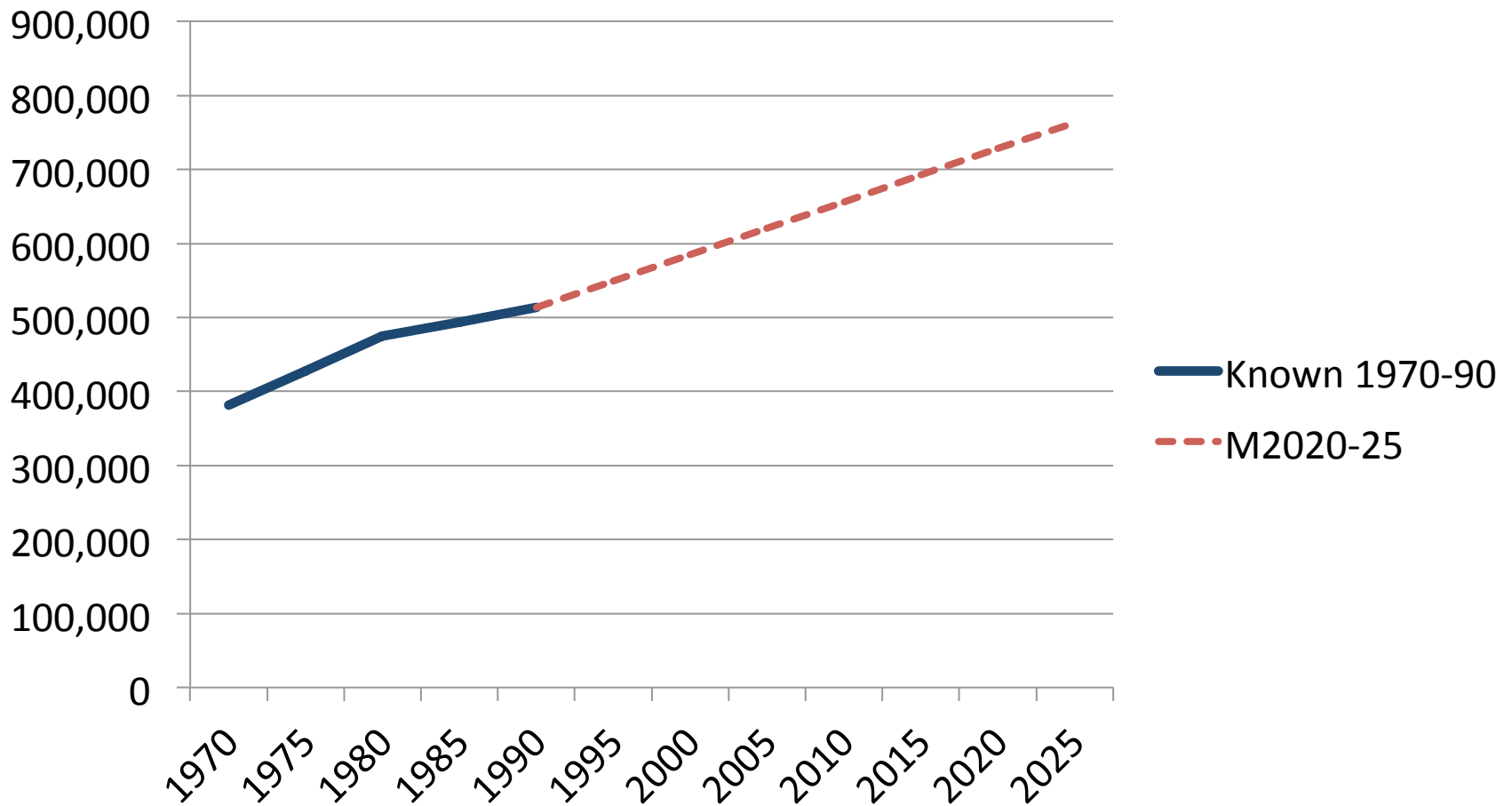


Slowdown After 2010

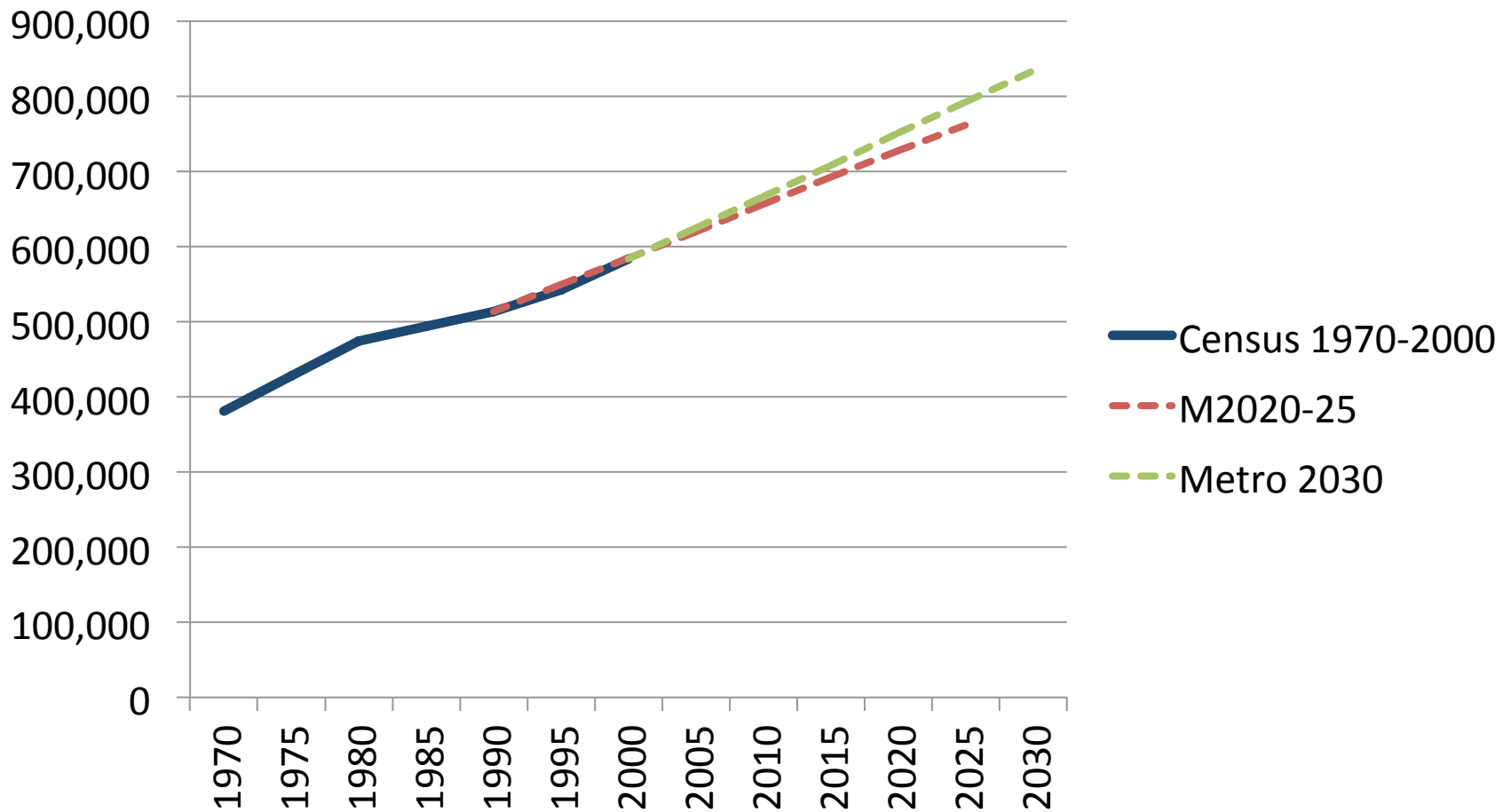
- Job trend was better than average during Great Recession
- Job growth never returned to previous levels after recession
- In-migration has slowed



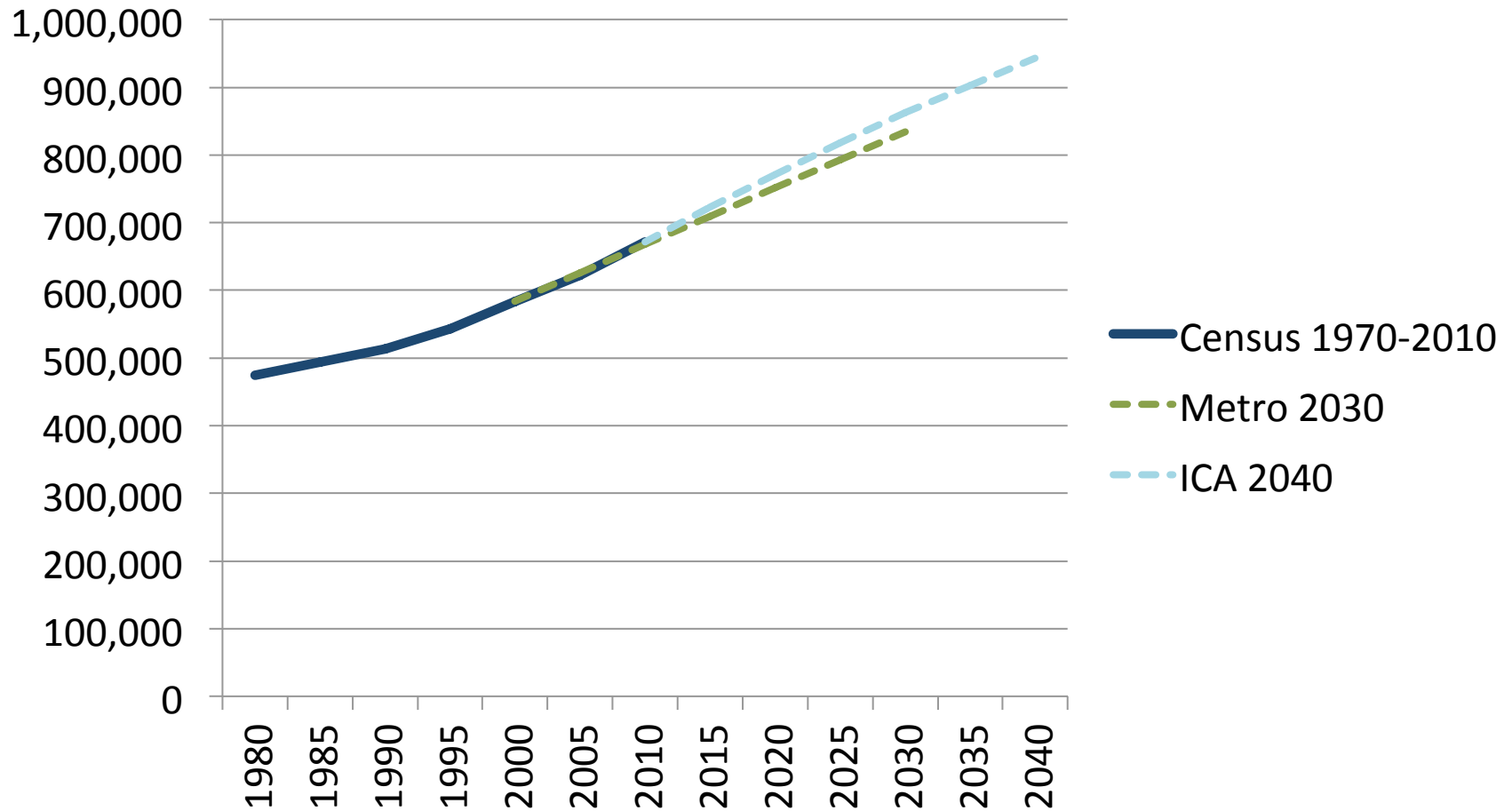
Metro 2020 Projections



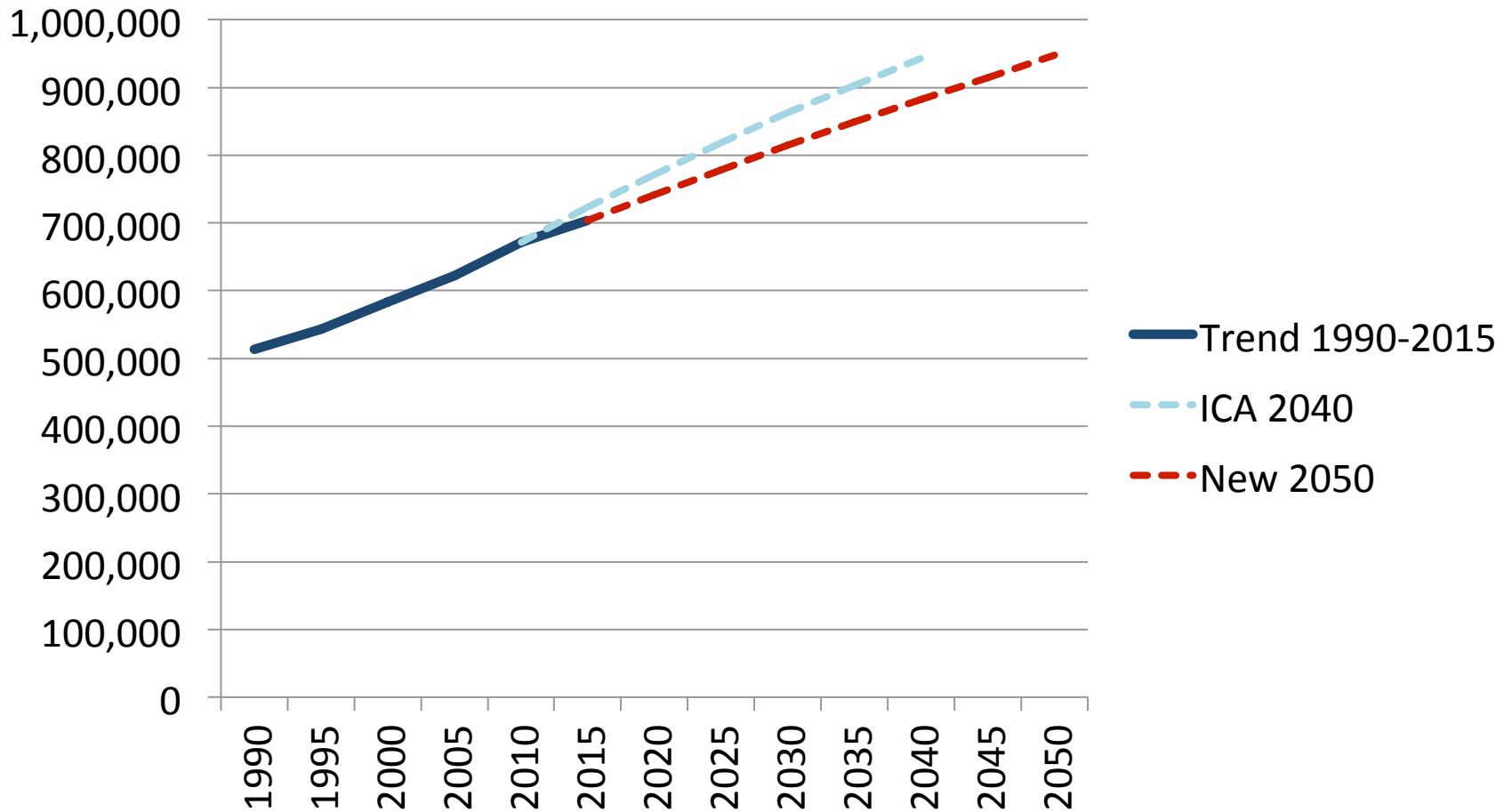
Metro 2030 Projections



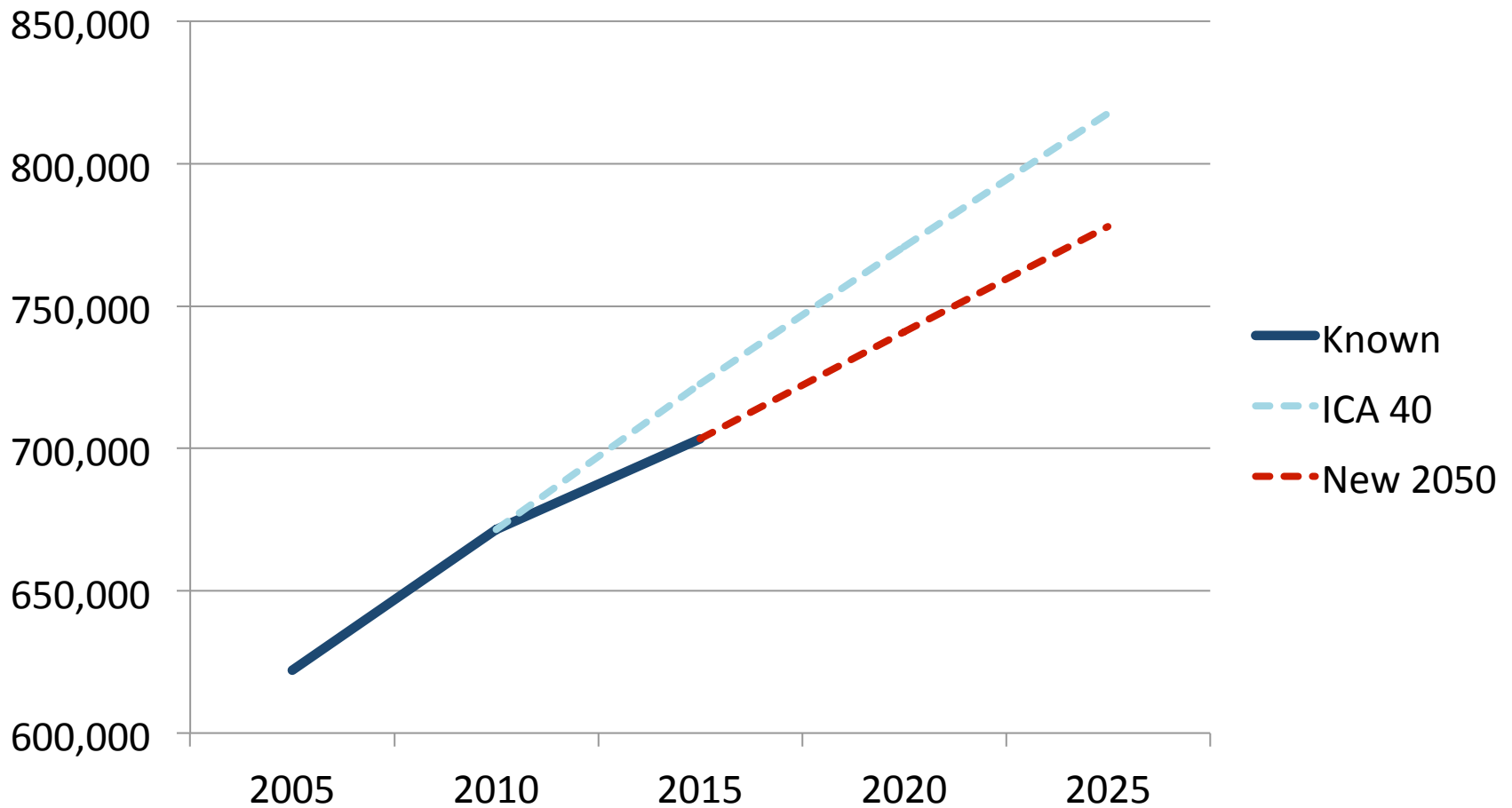
ICA 2040 Projections



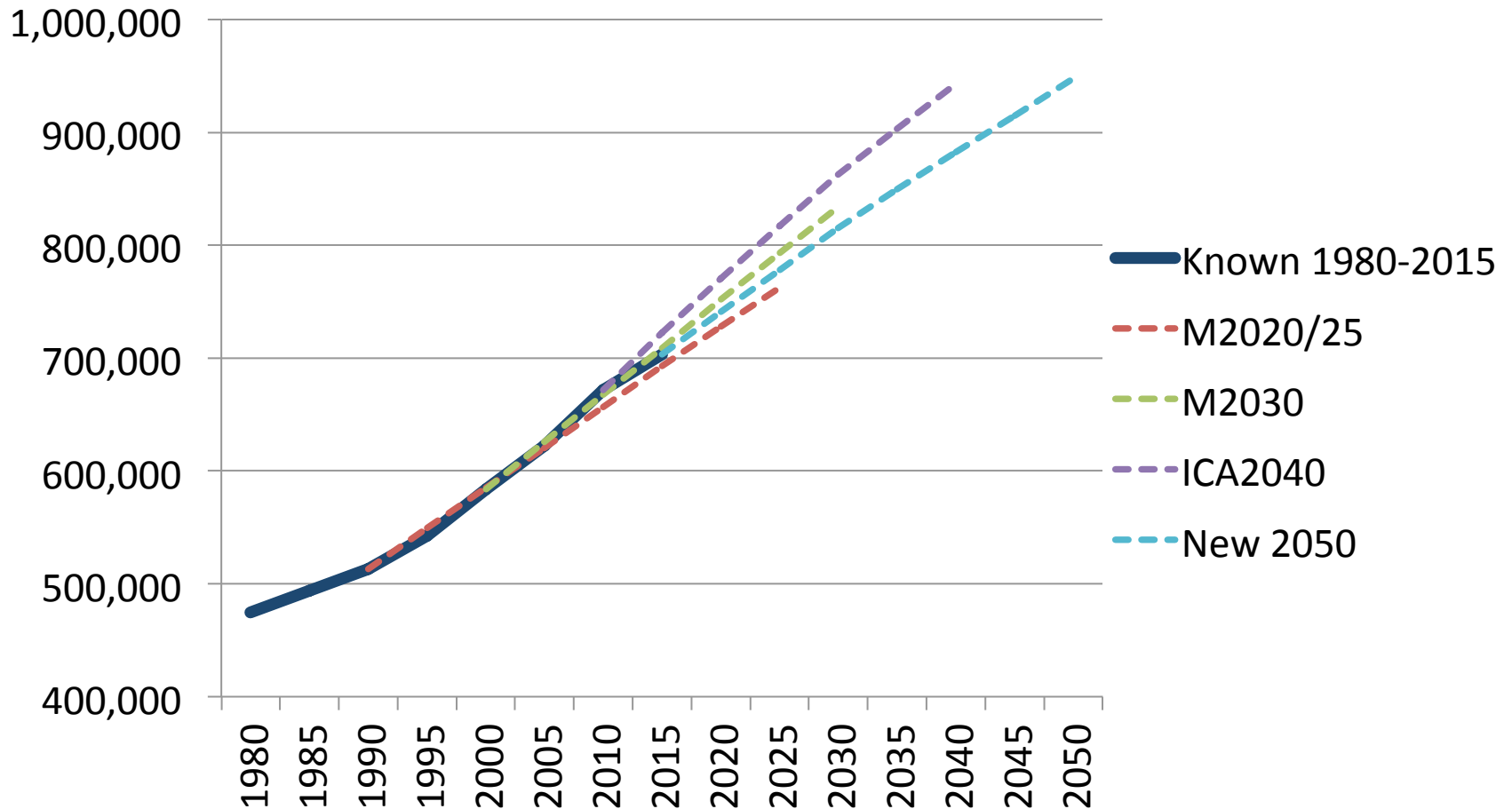
Proposed 2050 Projections



2005-2025 (Zoom-In)



Population – Known 1980-2015 and Projected to 2050



Employment Futures

- Jobs are changing
- We lost a huge share of manufacturing jobs in late 20th century
- Retail is starting to see job losses, and magnitude of loss will probably grow
- Transportation sector jobs could be next

The Future of Jobs?

- More hopeful than you might think
- We're not in the only era when the future of jobs was in question
- An old and trusted friend: look toward ICE for future jobs:
 - Information
 - Communications
 - Entertainment

Changing Workforce



Farming

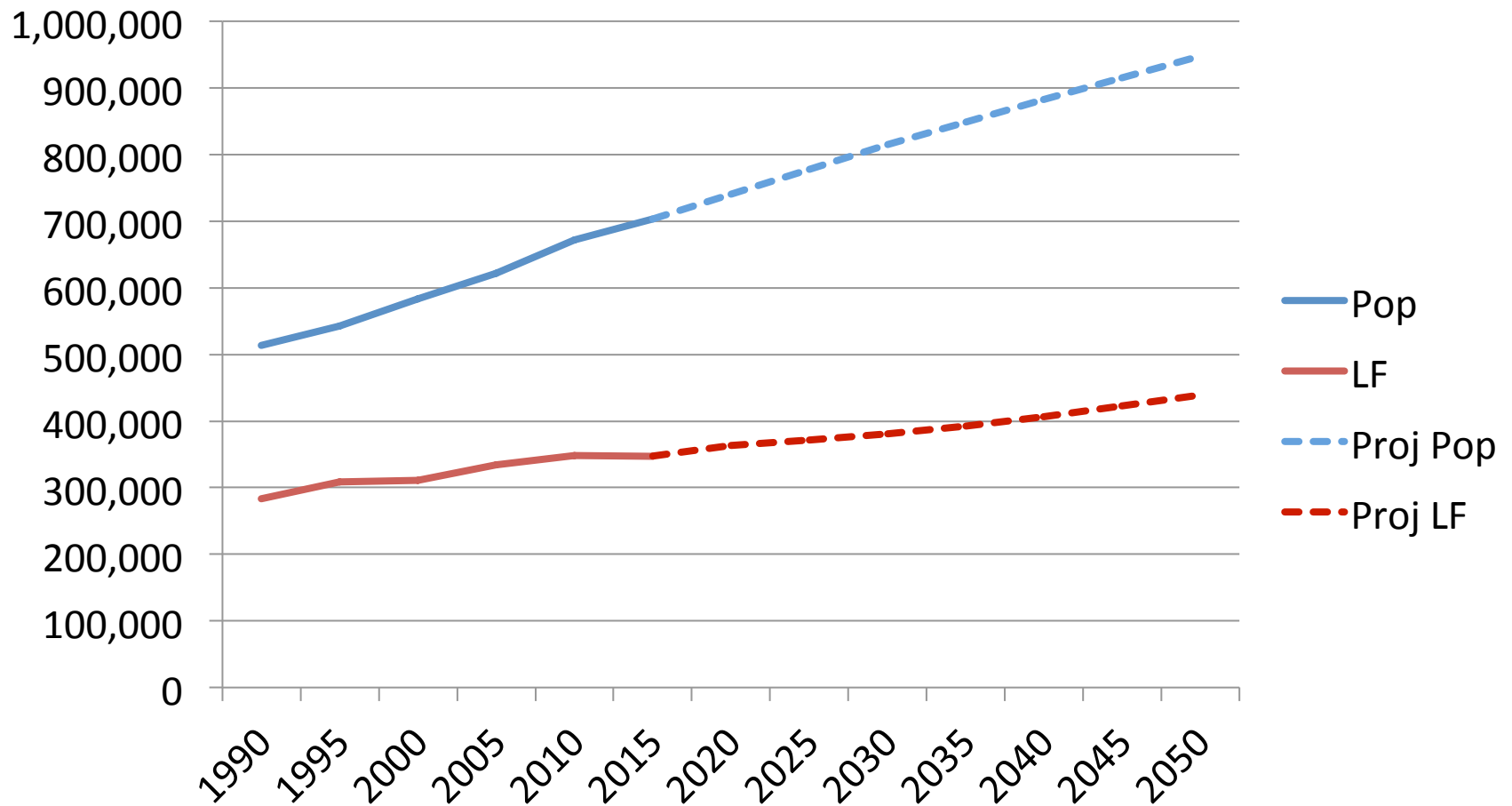
- 84 percent of jobs in 1810
- 31 percent in 1910
- 0.3 percent 2014

Future jobs

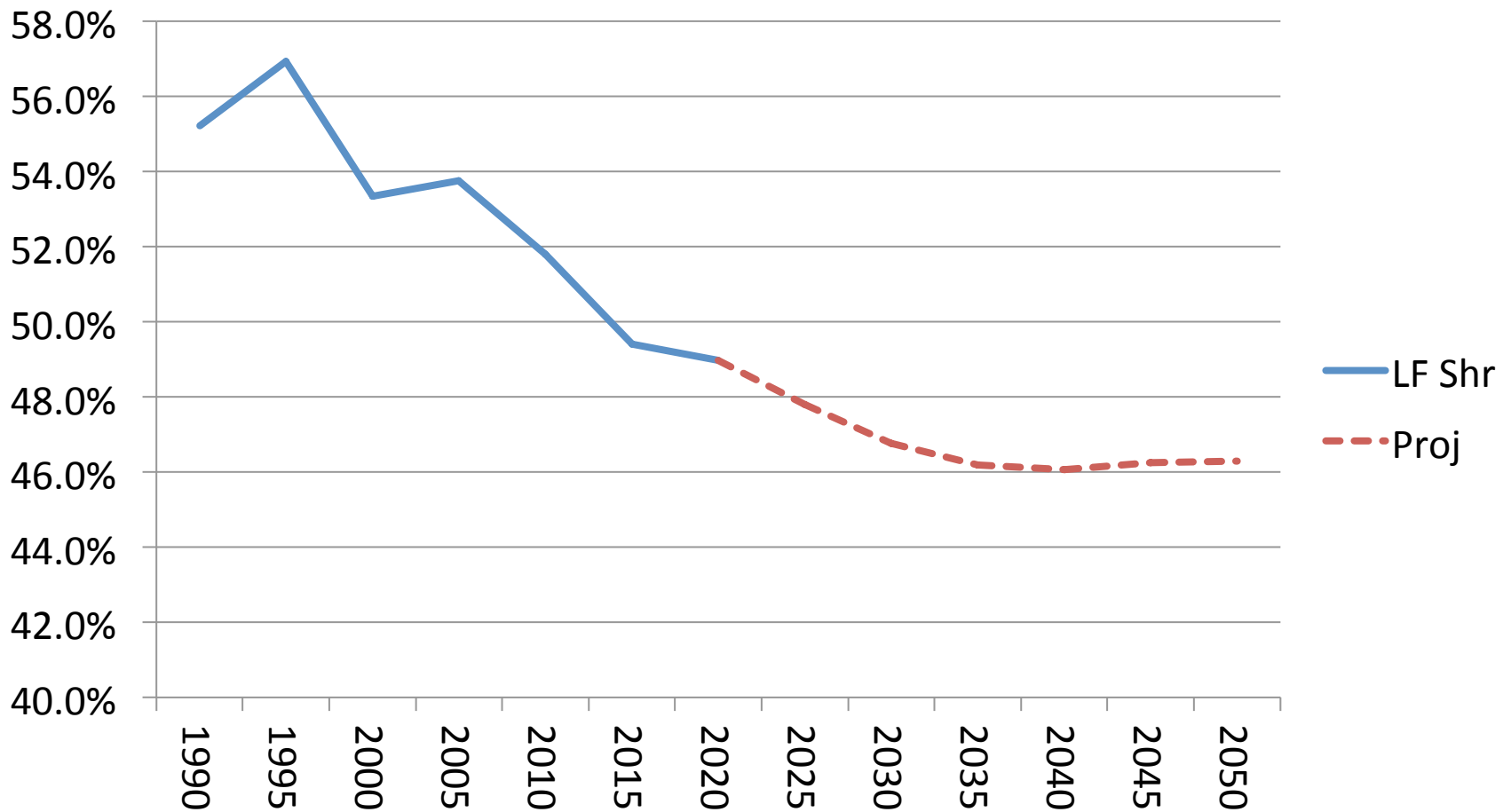
- Analysis / research
- Human touch
- Creative tasks



Future Population and Labor Force



Regional Labor Force as Share of Population



Ad Hoc Committee

- Interested in demographics and economics?
- Want to study graphs and charts?
- I do the hard part
- You get the fun part
- Off-campus meetings (coffee houses preferred)

