

MPO 101

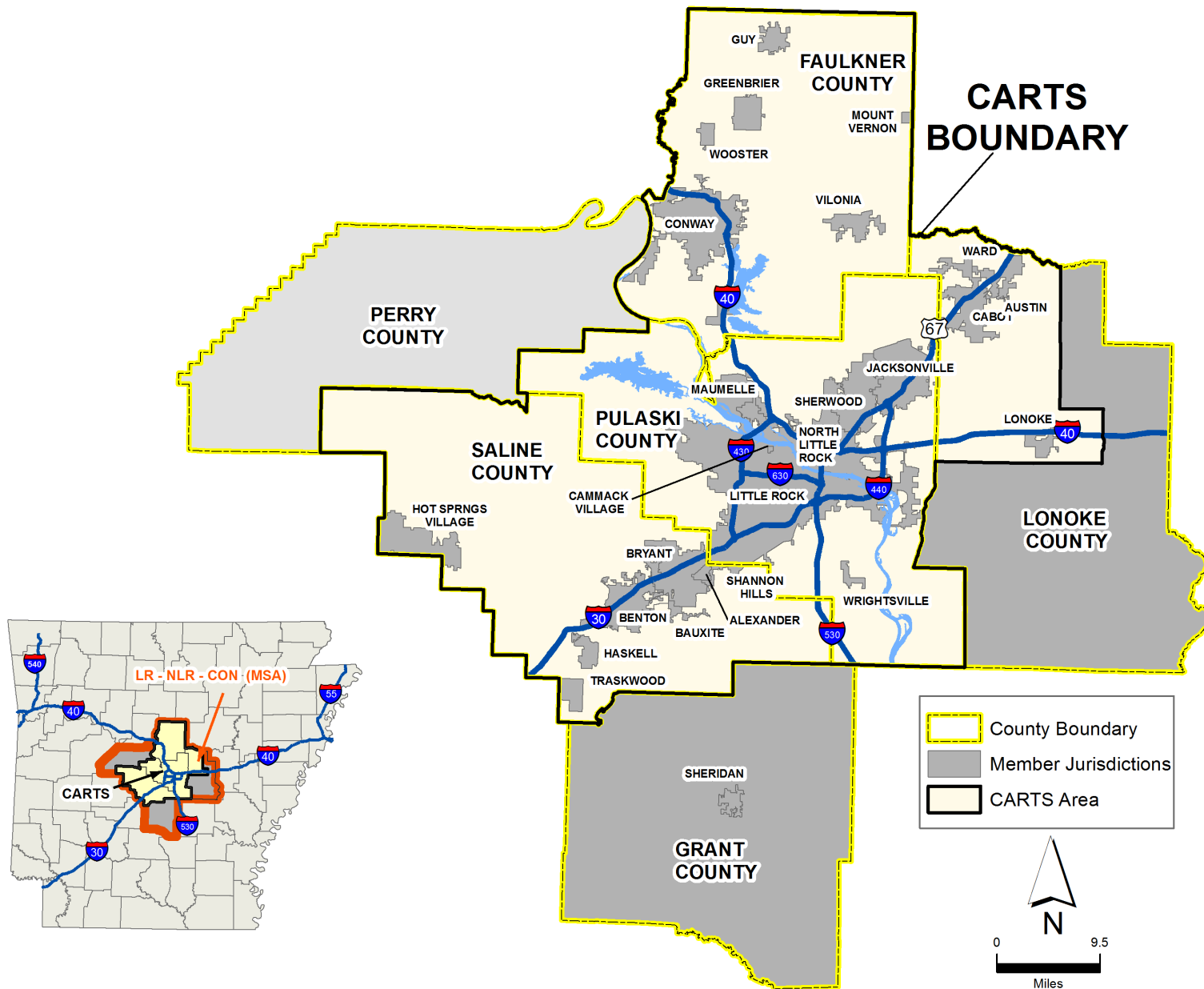
Regional Planning Advisory Council
Technical Coordinating Committee

Wednesday, February 21, 2018



METROPLAN

SMART PLANNING MAKES SMART PLACES.



2018 Leadership

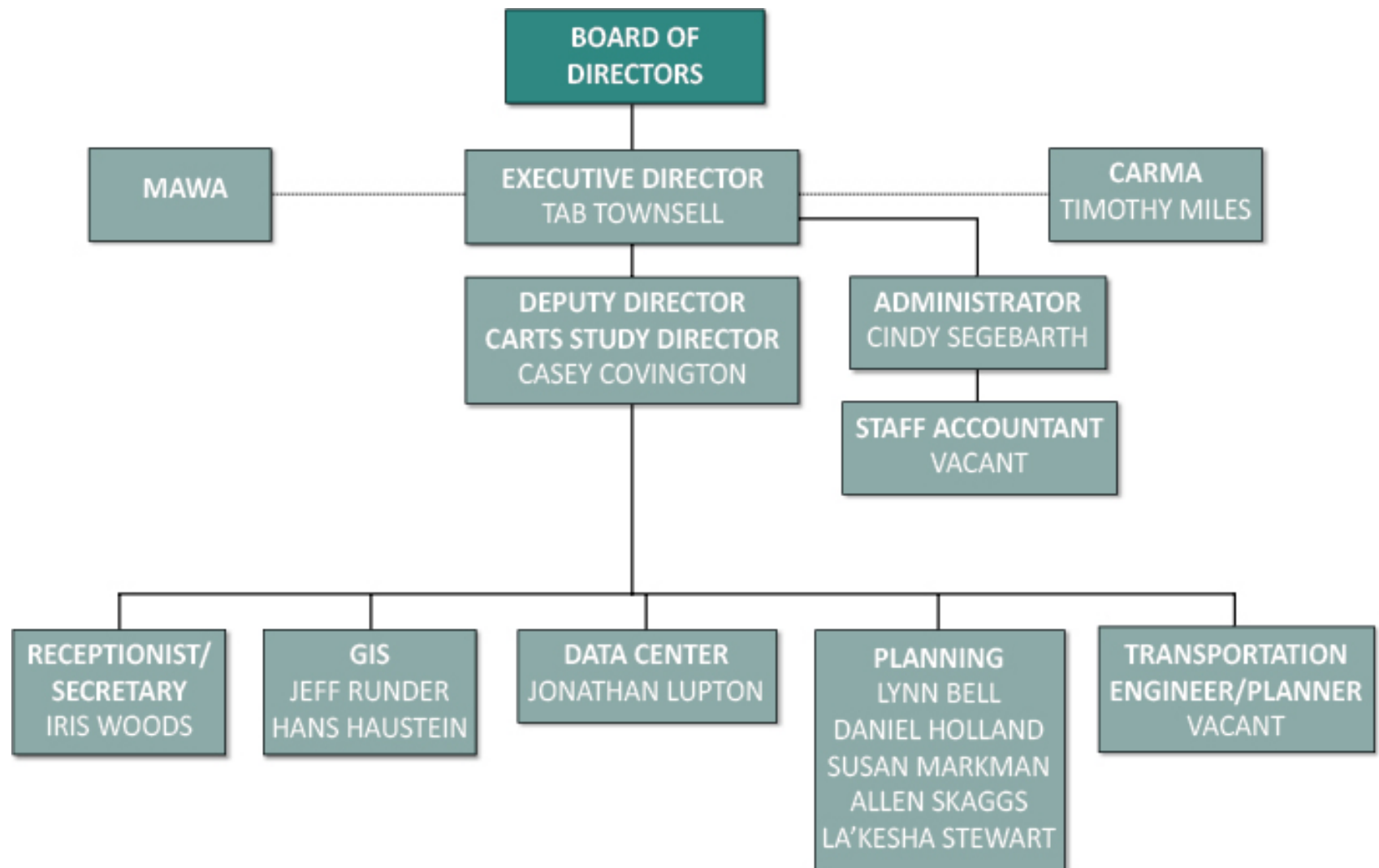
President – Mayor **Jill Dabbs**, Bryant

Vice President – Mayor **Joe Smith**, NLR

Secretary – Judge **Jim Baker**, Faulkner County

Treasurer – Judge **Doug Erwin**, Lonoke County





A (very) brief history

1955 – Regional Planning Commission

1970 – Council of Governments (COG)

1974 – Metropolitan Planning Organization (MPO)

METROPLAN

METROPOLITAN AREA PLANNING COMMISSION OF PULASKI COUNTY

216 PULASKI COUNTY COURTHOUSE — LITTLE ROCK, ARKANSAS



METROPLAN

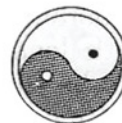
METROPOLITAN AREA PLANNING COMMISSION

216 PULASKI COUNTY COURTHOUSE — LITTLE ROCK, ARKANSAS 72201



METROPLAN

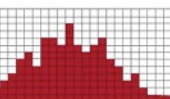
Continental Building—100 Main • Little Rock, Arkansas 72201



METROPLAN

800 WALLACE BUILDING • 105 MAIN STREET
LITTLE ROCK, ARKANSAS 72201

METROPLAN



METROPLAN

SMART PLANNING MAKES SMART PLACES.

**THE DWIGHT D. EISENHOWER SYSTEM OF
INTERSTATE AND DEFENSE HIGHWAYS**



Metropolitan **P**lanning **O**rganizations were created by federal law in 1962.

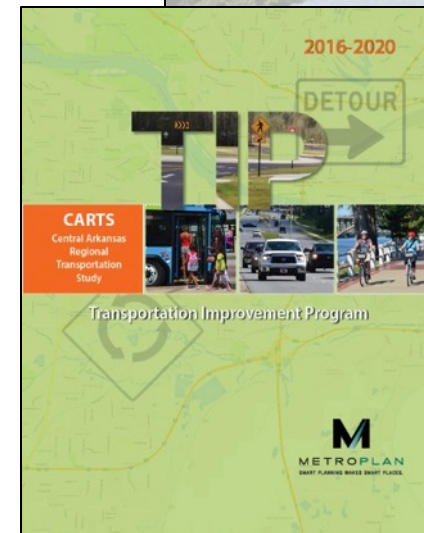
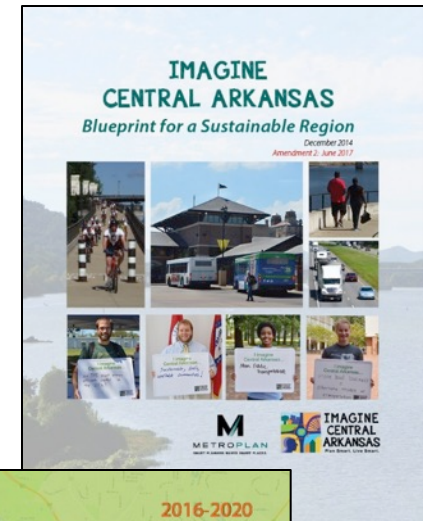
*“... cooperative transportation planning in **certain urban areas** by Federal, State, and local authorities.”*

Federal Aid Highway Act



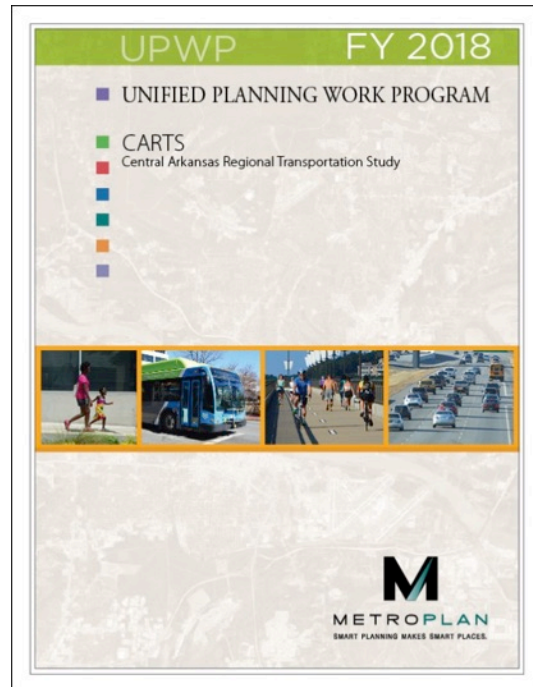
Charged with:

- ✓ Producing a long-range regional transportation plan (LRMTP)
 - 20 year planning horizon
 - Financially constrained
- ✓ Developing a Transportation Improvement Program (TIP)

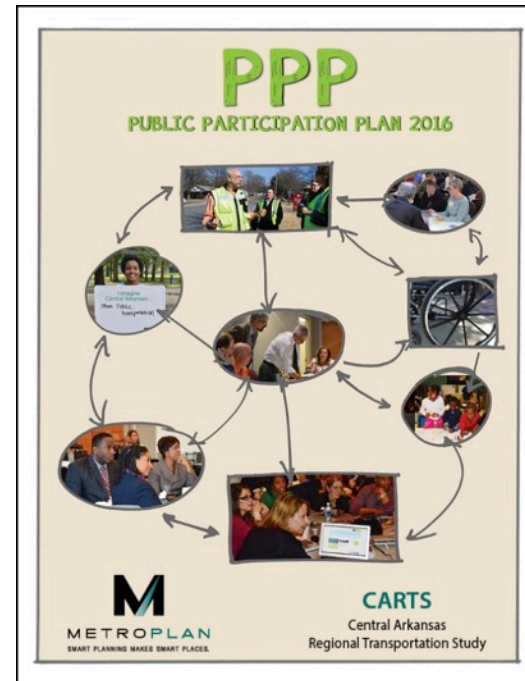


Additional required documents

- Unified Planning Work Program (UPWP)
- Public Participation Plan (PPP)



TCC



RPAC

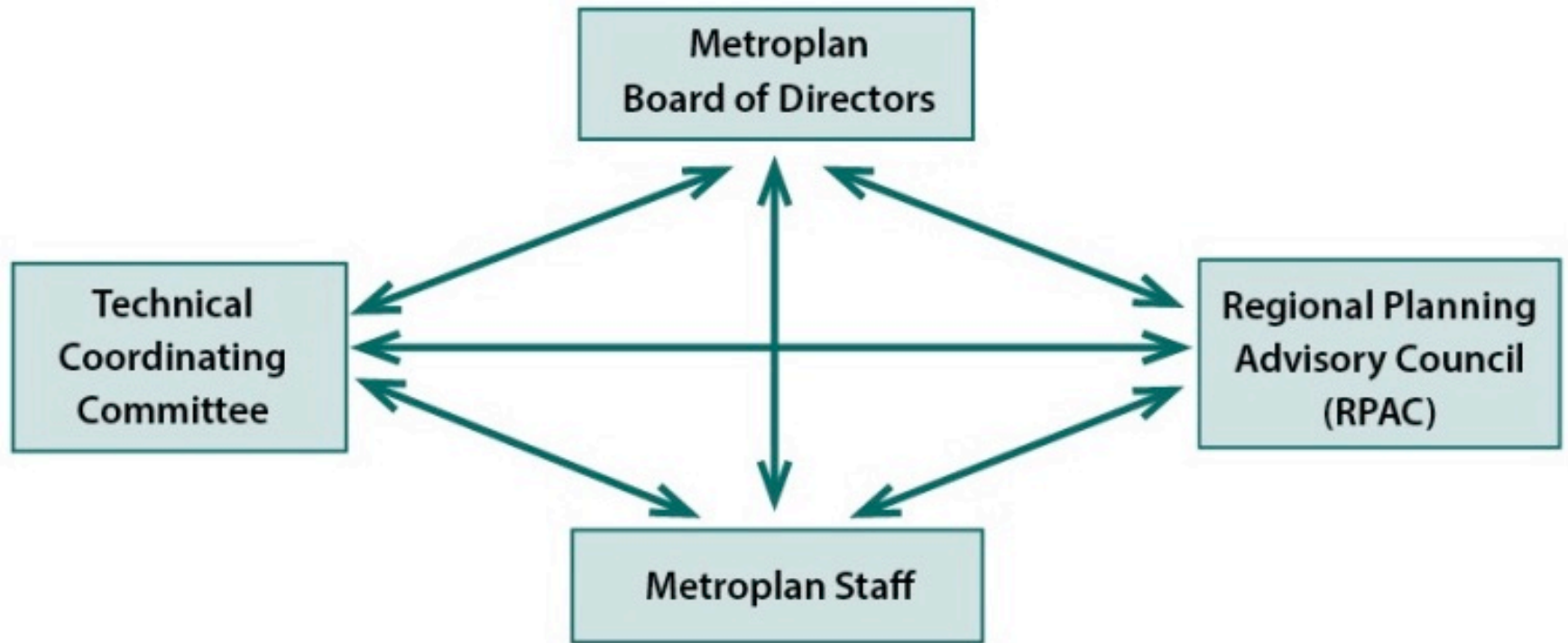
1992 Intermodal Surface Transportation Efficiency Act (ISTEA)

Metroplan reorganized to address new requirements:

- ❖ Public engagement
- ❖ Multi-modal and inter-modal planning



METRO
2020



Technical Coordinating Committee

Technical staff of member jurisdictions, including ArDOT and Rock Region METRO

Responsible for:

- Transportation Improvement Program (TIP)
- UPWP review
- Technical review of studies and projects
- **Assisting with technical aspects of LRMTP, e.g. alternative analyses, iterative drafts**

Works with:

- RPAC
- Metroplan staff

Regional Planning Advisory Council

Citizen-based; diverse – geographical, ethnic, interest groups . . .

Responsible for:

- Drafting **strategic overview of long-range transportation plan** to submit to the Board
- Developing & overseeing **public engagement** LRMTTP & TIP
- Considering other matters that the Board may refer

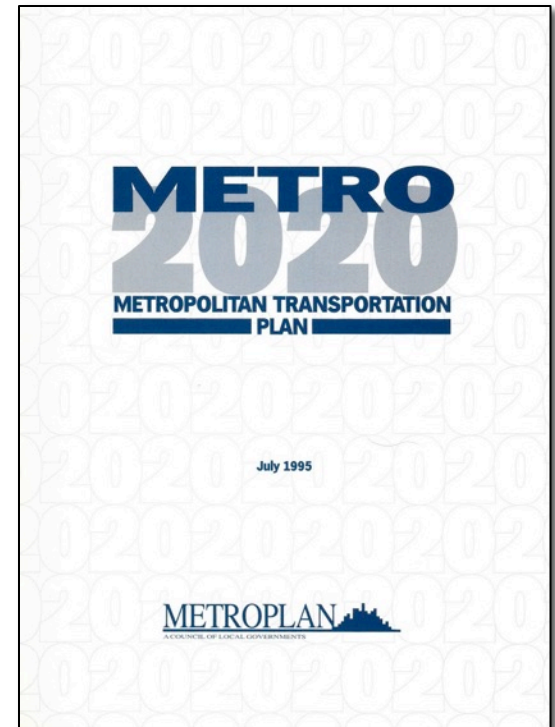
Works with:

- TCC
- Metroplan staff

The Metropolitan Transportation Plan Vision Statement

The Metropolitan Transportation Plan will contribute to a more livable and efficient environment in central Arkansas. This plan should significantly change how we allow our transportation systems and our communities to develop, by defining an intermodal transportation system that:

- *Maximizes the mobility of people and goods;*
- *Minimizes transportation related fuel consumption and air pollution; and*
- *Establishes a strong link between transportation infrastructure and land use.*



Imagine Central Arkansas Vision Statement

Imagine Central Arkansas is a community-driven guide to creating a sustainable, healthy and prosperous region that celebrates diversity, community cooperation, educational excellence, economic vibrancy, and quality choices in housing and transportation. Imagine...

What's next

- **White Paper update (Casey)**
- *Imagine Central Arkansas* update will be the focus of 2018-2019 (Daniel)
- Demographic Report (Jonathan)
- Public Engagement (Kesha & Susan)



**IMAGINE
CENTRAL
ARKANSAS**
Plan Smart. Live Smart.