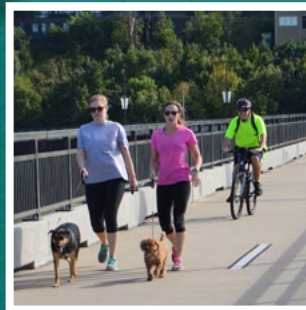
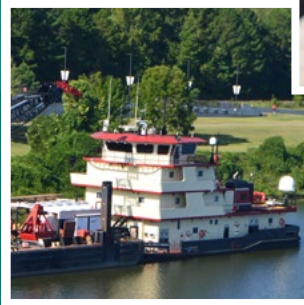


METROPLAN Regional Advisory Committees



METROPLAN
SMART PLANNING MAKES SMART PLACES.

2019



TABLE OF CONTENTS

1 - WELCOME TO THE REGIONAL ADVISORY COMMITTEE	2
2 - ABOUT METROPLAN AND CARTS	3
• METROLAN'S HISTORY	4
• METROPLAN'S ROLE AND PURPOSE.....	6
• FREQUENTLY ASKED QUESTIONS	9
• TIP PROJECT MAP	10
• PLANS AND IMPLEMENTATION/KEY DOCUMENTS	12
• PLANS AND IMPLEMENTATION/SUPPORTING DOCUMENTS	13
3 - MEMBER ROSTERS	15
• 2019 REGIONAL PLANNING COMMITTEES.....	14
• 2019 METROPLAN BOARD.....	16
4 - ORGANIZATION	21
• REGIONAL ADVISORY COMMITTEES (RAC).....	22
• METROPLAN MEETINGS	22
• TRANSPORTATION PLANNING ORGANIZATIONAL CHART	23
5 - STAFF	25
• METROPLAN STAFF ROSTER.....	26
• METROLAN STAFF ORGANIZATION CHART.....	27
• METROPLAN STAFF BIOS	28
6 - APPENDICES	33
• GLOSSARY.....	34
• METROPLAN AWARDS.....	35



- ABOUT METROPLAN -

- ABOUT METROPLAN
- CENTRAL ARKANSAS REGIONAL TRANSPORTATION STUDY (CARTS)
- METROLAN'S HISTORY
- METROPLAN'S ROLE AND PURPOSE
- FREQUENTLY ASKED QUESTIONS
- PLANS AND IMPLEMENTATION/KEY DOCUMENTS
- PLANS AND IMPLEMENTATION/SUPPORTING DOCUMENTS

WELCOME TO THE REGIONAL ADVISORY COMMITTEES

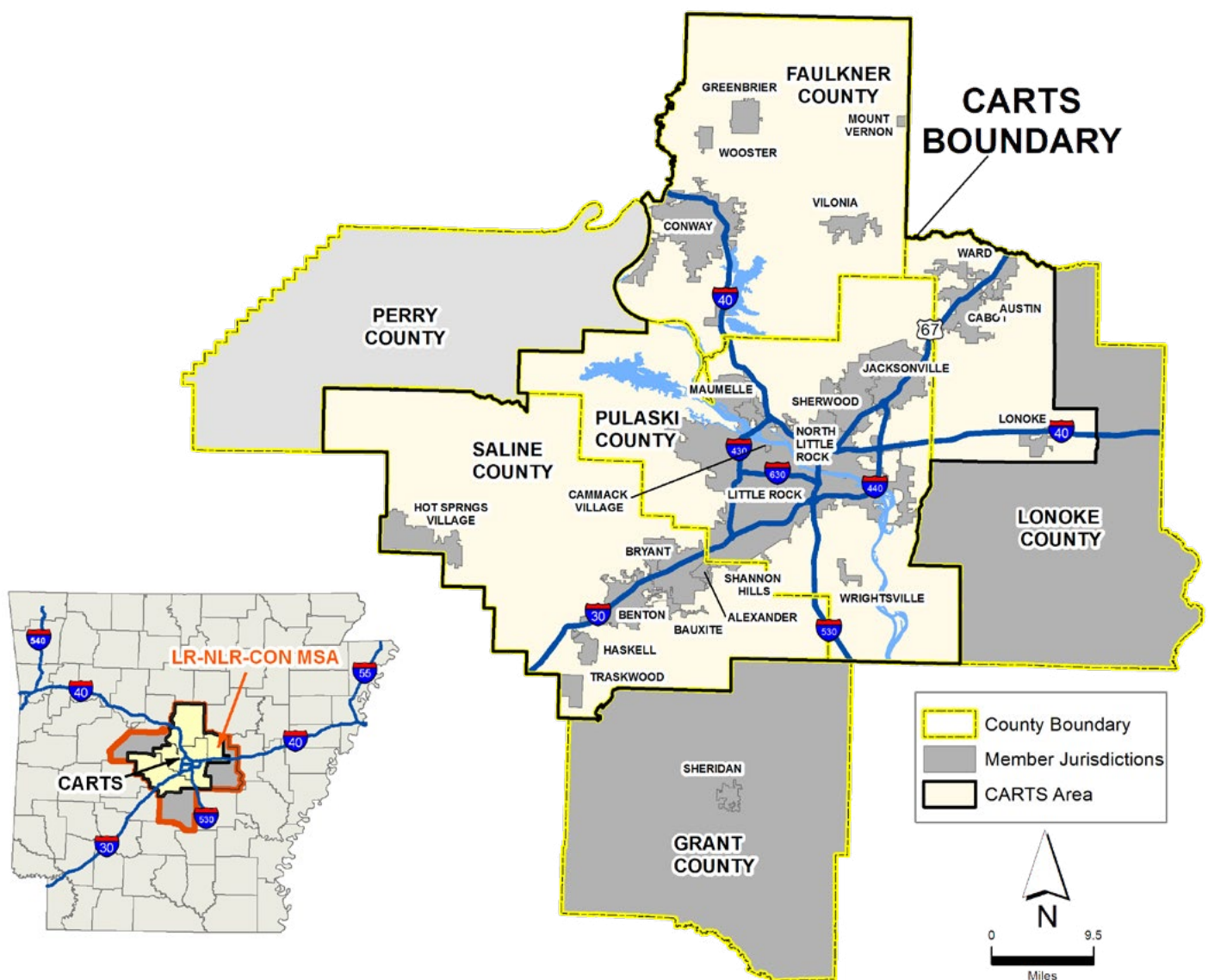
Welcome aboard.

You care about the future of central Arkansas. That's why you applied to be selected as a participant in regional planning as a member of Metroplan's Regional Advisory Committees. Over the next four years, you will help craft the Metropolitan Long Range Transportation Plan, or MTP. When adopted, the MTP will serve as a guide to implementing projects and policies that will reflect the aspirations of central Arkansans.

The following pages consist of an overview of Metroplan's history, role and purpose, and its organizational structure.

There is also information on the work of Metroplan and the role of the RAC.

We suggest you keep these pages in a three-ring binder so that you can easily access and update the information you will be given. Throughout the next many months, we will provide a lot of information. Everything will be accessible online as well as print copies.



Note: Grant County, the City of Sheridan and Hot Springs Village are non-voting members. Perry County is part of the six-county MSA, but not a Metroplan member.

ABOUT METROPLAN AND CARTS

Metroplan is a voluntary association of local governments that has operated by interlocal agreement since 1955. Originally formed as the Metropolitan Planning Commission of Pulaski County, Metroplan now has members in a five-county area.

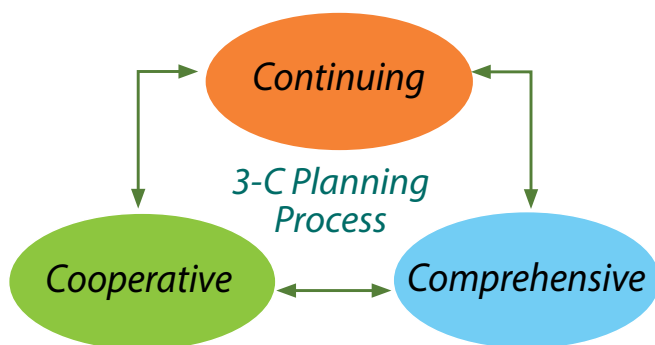
Metroplan is the designated metropolitan planning organization (MPO) under Title 23 of the United States Code (see specifically Section 134 on Metropolitan Planning) and has been since 1972. As the MPO, Metroplan must adopt both a long-range transportation plan, covering at least 20 years, and a short-range implementation document called the Transportation Improvement Program (TIP), which selects projects from the long-range plan to fund for construction. These documents are developed in accordance with the “3-C” process—comprehensive, cooperative and continuous—and cover federal-aid surface transportation projects and regionally significant projects within the CARTS area. No federal transportation money can be spent on a project in the area unless that project is in the long-range plan and the TIP.

In addition to those requirements, Metroplan assists member governments in a variety of enterprises. Staff provides technical assistance in writing and updating zoning and subdivision regulations, comprehensive

planning, and strategic plans and studies—examples of which include biking and walkability assessments and plans, sustainability and “green” community plans, and access management. Metroplan also conducts training workshops for elected and appointed officials, and sponsors “best practices” seminars for its member jurisdictions.

Metropolitan areas that receive federal-aid transportation dollars are organized into regional transportation study areas to cooperatively plan and utilize scarce federal resources. In central Arkansas, the Central Arkansas Regional Transportation Study area, or CARTS, is the cooperative effort by the participating communities, transportation providers, and other interested parties to develop a long range transportation plan for the metropolitan area.

Signatories to the CARTS Agreement of Understanding agree to participate cooperatively in the preparation and implementation of plans and projects.



Metroplan acts as a voice of regionalism for the Central Arkansas metropolitan area. Metroplan works with citizens, civic and business organizations, and local governments to develop consensus-backed solutions that contribute to our region's long-term vitality.

As the area's designated Metropolitan Planning Organization (MPO), Metroplan serves 28 municipalities and five counties in the core of the region plus Arkansas Department of Transportation (ArDOT) and Rock Region METRO. The Little Rock Port Authority and the Bill and Hillary Clinton National Airport were added as members in 2018

METROPLAN'S HISTORY

Local political and business leaders created Metroplan in 1955, acting out of necessity and inspired by the principle that the metropolitan area was one community and that the problems and opportunities of each entity were common to all. Today, Metroplan is a voluntary membership organization open to any local government in the metropolitan area and supported by member dues and federal and state grants.

Originally formed as the Metropolitan Area Planning Commission of Pulaski County in 1955, Metroplan has served as the area's federally designated Metropolitan Planning Organization (MPO) since 1972. Its function as an MPO is to work with local governments, the state department of transportation, and local transit providers to determine transportation needs and funding priorities for federal transportation investments. Metroplan also provides general planning, mapping, and technical assistance to local governments.

Over the years, Metroplan helped plan such signature projects as Burns Park in North Little Rock, the open space design for the Pulaski County banks of the Arkansas River—which would become Riverfront Park, and the Big Dam Bridge. Metroplan also helped incorporate the Mid-Arkansas Water Alliance (MAWA) to secure long-term sources of high quality drinking water for the region, and is involved in a variety of efforts to safeguard and improve the air quality of the region including partnering with other organizations to administer Ozone Action Days, an effort to raise awareness about the health effects and means of reducing ground level ozone, and coordinating the Central Arkansas Rideshare program which provides public information about carpools, vanpools, and express buses.

METROPLAN MILESTONES:

1950s:

- Metroplan began operations in 1955 by interlocal agreement as a voluntary association of local governments.
- Anniversaries of Metroplan and Little Rock Air Force Base (LRAFB) are inexorably linked, as LRAFB was a large catalyst in the formation of Metroplan.
- Initial plans included "Proposed Highway System" (1956), Preliminary Development Plan for Pulaski County (1957), and "Plan for Half Million People" (1957).

- Early park plans included A Preliminary Report on the Recreational Use of Lake Maumelle, Site Layouts for a Basic Recreational Plan on Lake Maumelle (1958) and A Plan for Burn Parks (1959).

1960s:

- Major plans in the 1960s included the Industrial Growth Plan (1962), Comprehensive Development Plan, Pulaski County Metropolitan Area (1964), Adams Field Airport Plan, and Civil Defense Plan (1965), Pulaski Area Transportation Study – Highway Transportation Plan and Implementation Program, and recommendation that school districts in Pulaski County consolidate (1966), Master Plan Report: Water Supply and Distribution, and Transit Planning Study (1967), and the 1990 Comprehensive Development Plan, Pulaski/Saline Metropolitan Area (1968).

1970s:

- In 1970, the Metropolitan Planning Area Commission of Pulaski County reorganized as a council of local governments and changed its name to Metroplan.
- Published Open Space Plan and Program in 1970.
- In 1971, partnered with Arkansas Chapter of the American Institute of Architects to create a park/open space design for the Pulaski County banks of the Arkansas River, which would become Riverfront Park.
- Since 1972, Metroplan has been the area's designated Metropolitan Planning Organization (MPO).
- Metroplan became the trustee for Central Arkansas Transit (CAT) in 1972.
- Designated lead agency for water quality planning in 1977.
- Designated lead agency for air quality and waste disposal planning in 1978.

1980s:

- Published Maumelle Corridor Control Access Plan in 1981.
- Proposed South loop on E-W border of Pulaski County in 1983.
- Completed Fourche Creek Urban Runoff Project and Lake Maumelle Clean Lakes Project in 1982.
- Central Arkansas Transit Authority (CATA) formally spun off in 1988.
- Metroplan became the administrative agent for Pulaski County 911 in 1989.
- Established public policy research program in 1989 – publishing An Analysis of State General Revenue Turnback in Arkansas, Jail Overcrowding In Pulaski

County: A Preliminary Assessment, Arkansas Local Government Tax Capacity, and Metropolitan Regional Solid Waste Study.

1990s:

- In 1991, Congress passed the Intermodal Surface Transportation Efficiency Act (ISTEA).
- Also in 1991, Metroplan initiated its broadest reorganization since 1970—narrowing its focus to transportation and the implementation of ISTEA.
- Central Arkansas Regional Transportation Study (CARTS) replaced the Pulaski County Area Transportation Study (PATS) in 1991.
- Transportation Advisory Council (TAC) formed in 1991.
- Faulkner and Lonoke Counties joined Metroplan in 1991.
- In 1995, METRO 2020 long-range transportation plan adopted.
- In 1997, Metroplan partnered with three other organizations to administer Ozone Action Days.
- In 1998, Transportation Equity Act for the 21st Century replaced ISTEA.

2000s:

- Published METRO 2025 in 2000.
- In 2000, Metroplan received the National Award for Outstanding Leadership in Metropolitan Transportation Planning from the Association of Metropolitan Planning Organizations.
- Metroplan became the host agency for Clean Cities in 2000.
- In 2001, held initial meeting of small and large water systems.
- Published CARTS Intelligent Transportation System (ITS) Plan in 2002.
- In 2003, helped incorporate the Mid-Arkansas Water Alliance (MAWA) to secure long-term sources of high quality drinking water.
- Metroplan assisted CATA in planning River Rail trolley system, beginning routes in 2004.
- Metro 2030 published/adopted in 2005.
- SAFETEA-LU was passed by Congress in 2005. It expired in 2009.
- In 2007, Metroplan assisted with the planning and funding for the Big Dam Bridge and Two Rivers Park Bridge projects.

- Metroplan hosted the Association of Metropolitan Planning Organizations (AMPO) National Conference in 2007, setting a record for attendance.
- Metroplan won national awards for Benton Planning Studies Report and Walkable Cabot planning.
- In 2008, Metroplan created and published a bike map for Central Arkansas.
- Operation Bottleneck set public feedback record with more than 3,000 responses in 2008. The campaign won a PRSA PRISM Award in 2009.
- Metroplan established Green Agenda program for the region in 2008. This received PR, social media and public participation awards in 2009 and 2010.
- In 2009, Metroplan coordinated American Recovery and Reinvestment Act (ARRA) projects in central Arkansas.

2010s

- Since 2010, Metroplan has received numerous awards for planning and publications. See the complete list in the Appendix.
- In 2010, MAWA coordinated the signing of the Greer's Ferry reallocation project that secures high-quality water supplies for decades to come.
- Metroplan created CARTS Infrastructure Exchange to stretch non-federal dollars in 2010.
- Metro 2030.2 published/adopted in 2010.
- In 2012, MAP-21 (Moving Ahead for Progress in the 21st Century) replaced SAFETEA-LU.
- In 2014, completed the Conway to Little Rock Express Bus Feasibility Study.
- *Imagine Central Arkansas* published/adopted in 2014, received an APA Award in 2015.
- Published the Pedestrian/Bicyclist Crash Analysis in 2015.
- In December 2015, Congress passed the FAST Act (Fixing America's Surface Transportation).
- In 2016, Metroplan helped establish the Southwest Trail Task Force to coordinate regional efforts to build the trail.
- In 2017, Tab Townsell became the new Executive Director and Casey Covington was promoted to Deputy Director/CARTS Study Director.
- The *Central Arkansas 2050* long-range plan update was published/adopted in 2018.

METROPLAN'S ROLE & PURPOSE:

Metroplan has four primary roles:

- Regional Voice
- Transportation Planner
- Environmental Steward
- Resource Provider

REGIONAL VOICE

Metroplan acts as the voice of regionalism in Central Arkansas by providing a regional forum for considering common problems, seizing common opportunities, and developing consensus-backed solutions that contribute to long-term economic vitality and regional growth.

The Central Arkansas region may be divided by city and county political boundaries but it acts as one integrated metropolitan economy with one job market and one housing market. It's a metropolitan economy that's in competition with every other metro economy on earth. Metroplan coordinates regional planning from this holistic approach.

As council of local governments, Metroplan serves 25 municipalities, Pulaski, Faulkner, Saline, and Lonoke counties. Grant and Perry Counties are part of the six-county Metropolitan Statistical Area.

Metroplan's members make up the organization — they are the voice of the region. Metroplan staff provides expertise and resources for its members to draw on as they plan for the future of the region.

TRANSPORTATION PLANNER

Metroplan's transportation role is to plan common infrastructure, especially the transportation systems that connect our communities with each other and with the world.

As the Metropolitan Planning Organization (MPO) for the area, Metroplan must adopt two types of plans:

- A long-range transportation plan (covering at least 20 years)
- And a short-range plan, the Transportation Improvement Program (TIP), which selects projects from the long-range plan to fund for construction in the next three years. The TIP is the tool by which the plan is implemented.

No federal transportation funds can be spent on a road project in the area unless that project is on the long-range transportation plan and the TIP. In addition, these plans

are to be developed in a "comprehensive, cooperative, and continuous" fashion and cover federal aid surface transportation projects in a four-county area defined by the Central Arkansas Regional Transportation Study (CARTS). A cooperative effort by participating communities, transportation providers, and many other interested parties, CARTS develops a long-range transportation plan for the metropolitan area.

Metroplan's public participation process includes ensuring that groups with interest in the transportation planning have a reasonable opportunity to sit at the table and have their interests represented. The Regional Planning Advisory Council (RPAC) is the primary means for meeting that objective.

The Technical Coordinating Committee (TCC) is charged with oversight of transportation project development and implementation including review of technical studies, alternative analyses and iterative plan development efforts.

ENVIRONMENTAL STEWARDSHIP

Metroplan helps communities deal with common environmental issues such as air quality and securing and protecting our long-term drinking water supplies—issues that clearly transcend local political boundaries. Metroplan helped incorporate the Mid-Arkansas Water Alliance to secure long-term sources of high quality drinking water and protect regional watersheds.

A new area of research for the organization is sustainability—environmentally and economically. Energy will play a key role in both in the future. This is an area that can have real pay-offs for taxpayers and businesses.

Realizing the importance of a sustainable future for our region, Metroplan is working to integrate environmental considerations into all its planning efforts. With this in mind, Metroplan, with assistance from like-minded organizations, coordinates the following environmentally-focused programs:

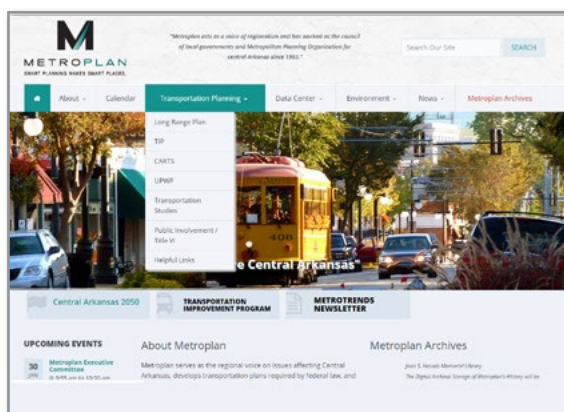
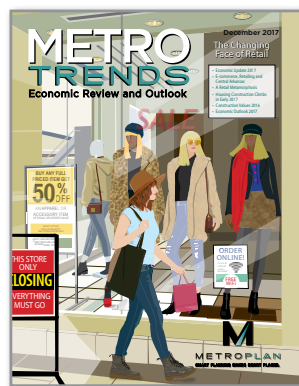
- Ozone Action Days—a program dedicated to helping the region breathe easy by educating central Arkansans about potentially harmful ground-level ozone and how they can help reduce it. Learn more at www.ozoneactiondays.org.
- Green Agenda Programs—focuses efforts to help local communities deal with common environmental issues that transcend political boundaries including the development and implementation of a Regional Green Agenda that informs regional and local planning and decision-making; guide the actions of

government; and convene collaborative efforts that result in a more sustainable region.

- Mid-Arkansas Water Alliance (MAWA)—in the 2000s Metroplan was instrumental in bringing together small and large water systems to help form MAWA. Today MAWA is a consortium of 25 public water utilities, associations, and municipalities that have joined together to secure the supplemental future water-source needs for an eight-county region.

• RESOURCE PROVIDER

Solid data and professional analysis are critical in making consensus-backed planning decisions. Metroplan provides data, mapping, analysis and projections to inform local decision makers, and, to a limited extent, to provide transportation funding. Metroplan acts as adjunct staff and technical specialists for member governments in transportation, land use, and the environment.



Metroplan publications, including *Metrotrends Economic Review & Outlook* and *Metrotrends Demographic Review & Outlook*, provide data and analysis to help you better understand the changes impacting this beautiful and unique region.

Metroplan produces a wealth of information on an annual basis and all of this data can be accessed online at www.metroplan.org. Agendas and minutes from Metroplan's monthly board meetings will be supplied to you by mail or e-mail. The following are the most requested documents:



- Unified Planning Work Program (UPWP)
- Transportation Improvement Program (TIP)
- Long Range Plans and updates
- Metrotrends newsletters
- Metroplan Annual Report

WHY METROPLAN IS IMPORTANT

Metroplan provides possibly the only forum for our local governing bodies to come together as the voice of regionalism for Central Arkansas. Add the fact that Metroplan is a voice for regional stewardship of our natural resources, and seeks consistent and in-depth input on what citizens want for the future of their communities, and you have all the ingredients needed to develop consensus-backed solutions.

Metroplan Communication Goals

Metroplan's visibility, effectiveness, and influence in the region are greatly impacted by the level of understanding about the organization among elected officials, other key stakeholders, and the general public. According to the results of a recently completed communications audit, Metroplan needs to improve its visibility and increase the level of understanding about the organization among these groups with the help of its board members—outlined in the following two goals:

You Are a Champion for Metroplan

To be a champion for Metroplan, you must share the organization's mission, role, and benefits with various audiences (e.g. general public, media, business community, etc.) in your community as well as present overviews of Metroplan to your local council members.

Metroplan's unique position as an objective council is very appealing to local governments, organizations, media, and the general public. In order to take advantage of this opportunity, Board Members must contribute to the overall communications effort as ambassadors for Metroplan.

WHAT CAN METROPLAN STAFF DO FOR YOU?

Metroplan contributes to long-term economic vitality and regional growth in a myriad of ways. Metroplan's resources are available to its dues paying members both in planning in those communities and for the region as a whole.

DATA

1. Respond to all kinds of questions regarding demographic and economic data
2. Publish MetroTrends Review & Outlook twice a year
3. Census assistance
 - Special Census
 - Decennial Census
 - Redistricting
 - Mapping

TECHNICAL ASSISTANCE AND MAPPING/GIS

1. Zoning and subdivision
2. Planning policy review
3. Planning studies
 - Comprehensive plans
 - Master Street Plans
 - Annexation studies
 - Walkability assessments/plans
 - Bike plans
4. Public engagement assistance
5. Promotion via social media
6. Grants review (including TAP submittal review)
7. Planning Commission training workshops
8. General mapping and analysis for cities
9. Fire Response Areas
10. Detailed demographic data
11. Pre-annexation Studies
12. Vehicle crash analysis, by corridor
13. Land Use planning
14. Corridor analysis and access management plans
15. Provide crash data/ safety analysis for pedestrian/bike/ auto

16. Traffic demand modeling of proposed projects
17. General mapping and GIS analysis (not related to census) this covers many things from optimal school location and fire station location, watershed analysis, emergency response times, utility mapping, and many other topics
18. Mapping and assistance for Rock Region Metro: system and route maps, walk time to stops, service area population estimates, etc.

PROJECT ASSISTANCE

1. Help to shepherd communities through highway projects
2. Project management (contract holders)
3. Allocate funds for projects that fall under Transportation Alternatives Programs (TAP) and Systems Optimizations

FREQUENTLY ASKED QUESTIONS

1. WHAT ARE ALL OF THE SERVICES THAT METROPLAN PROVIDES TO MEMBERS?

Services are currently focused in the following areas:

- Regional Transportation Planning
 - Air Quality
 - Water
 - Technical Assistance
- Included in membership dues:
- Demographics
 - Mapping/GIS
 - Zoning & Subdivision Regulations
 - Comprehensive & Strategic Planning
 - Walkable Communities Workshops
 - Redistricting (following special or regular census)
 - Traffic Studies
 - Data Center
 - Annexation Studies

2. WHEN WAS METROPLAN FORMED? BY WHOM? FOR WHAT?

The Metropolitan Area Planning Commission (MAPC) was formed by local political leaders in Pulaski County and the Committee of 100, a group of leading business leaders. Its purpose was to develop long-range plans for the public infrastructure necessary to support the economic development of the metropolitan area. Its first task was to coordinate the planning for the development of US 67-167 for access to the LRAFB.

Following passage of Act 26 of 1955, An Act To Enable Political Subdivisions To Cooperate Jointly In Area Planning, in February, 1955, the Metropolitan Area Planning Commission (MAPC of Pulaski County) was established on March 3, 1955 by Judge Arch Campbell, Pulaski County; Mayor Pratt Remmel, City of Little Rock; Mayor A.C. Perry, City of North Little Rock; Mayor E.D. Schmitt, City of Jacksonville. MAPC was a joint public/private planning commission from its formation until 1970 when it was reorganized into a council of local governments and renamed Metroplan.

4. HOW DOES METROPLAN SECURE FUNDING? HOW FAR ARE WE FUNDED OUT?

Approximately 65% of Metroplan funding comes from federal sources via the most recent transportation funding bill. The federal transportation bills customarily provide funding on an annual basis for a total of six years. However, not all funding authorized by the bill is actually made available over the course of the six years due to "obligation limitations"

and for other reasons. However, the recently passed MAP 21 legislation provided funding for only two years.

These transportation funds are automatically allocated to the metro area and the MPO based on congressionally agreed upon funding formulas contained within the transportation funding bills.

Federal transportation funding typically requires a 20% local match.

Occasionally, Metroplan will receive other federal grants from EPA, the Department of Energy or the Department of Housing and Urban Development. Metroplan also receives \$30,000 per year from the State of Arkansas as a regional planning council. The remainder of Metroplan funding is provided from local dues.

5. WHO QUALIFIES TO BE A MEMBER OF METROPLAN?

Any general-purpose government within Pulaski, Saline, Faulkner, Lonoke, Grant and Perry counties is eligible for full voting membership. Request for membership by jurisdictions is made to the Board and acted upon when received. Upon acceptance and payment of dues, members sit on the Board of Directors with one vote per jurisdiction (unless a weighted vote is called for by any member). Quorum is 10 voting members.

Special transportation membership is granted to Rock Region Metro and Arkansas Department of Transportation. They do not pay dues. Special Non-voting membership is also granted to Hot Springs Village (unincorporated community) and to the City of Sheridan and Grant County. Their dues are set at \$500 per year.

6. HOW DOES THE TIP PROCESS WORK?

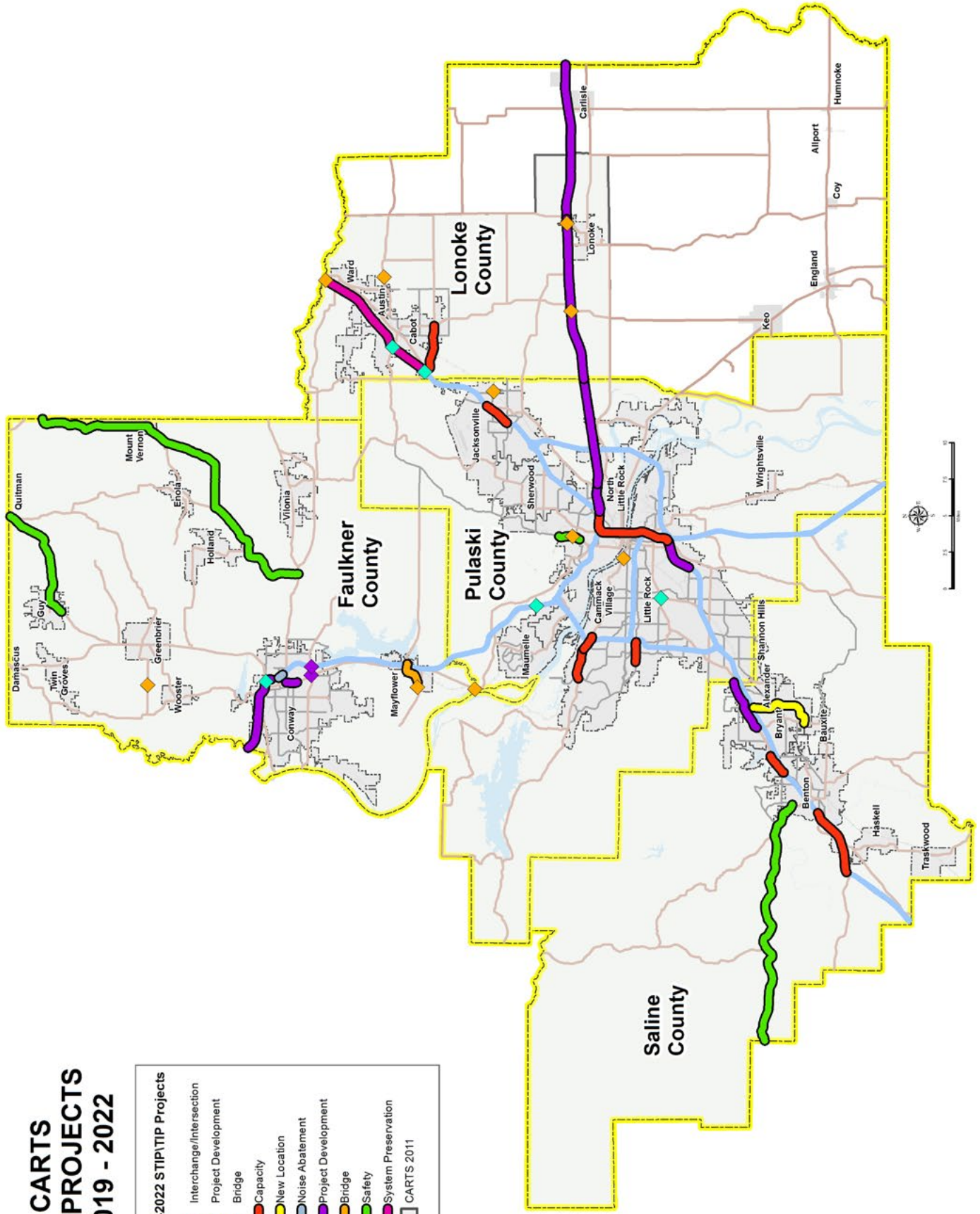
The Central Arkansas Regional Transportation Study (CARTS) Transportation Improvement Program (TIP) is the short-range programming tool that implements the regional long-range transportation plan. It covers a four-year period and contains all projects within the CARTS area that are to be funded with federal surface transportation funds.

Projects are placed on the TIP by proposing jurisdictions: ArDOT, Rock Region METRO, or a Metroplan member using federal funds to which they have access. The Metroplan Board has the sole authority to adopt the TIP. Ultimately, if the Board is not supportive of a particular project being proposed by the implementing agency or jurisdiction, its only recourse is to exclude the project from being placed in the TIP.

CARTS TIP PROJECTS 2019 - 2022

2019-2022 STIP/TIP Projects

- ◆ Interchange/Intersection
- ◆ Project Development
- ◆ Bridge
- ◆ Capacity
- ◆ New Location
- ◆ Noise Abatement
- ◆ Project Development
- ◆ Bridge
- ◆ Safety
- ◆ System Preservation
- CARTS 2011





- PLANS AND IMPLEMENTATION/
SUPPORTING DOCUMENTS-

PLANS AND IMPLEMENTATION / KEY DOCUMENTS

As MPO for central Arkansas, Metroplan is federally required to produce two core documents: (1) a long-range regional transportation plan; and (2) a four-year implementation document, the Transportation Improvement Program (TIP)

LONG-RANGE PLAN

The creation and maintenance of the region's long-range transportation plan is a core function of Metroplan as the designated Metropolitan Planning Organization for central Arkansas.

Metroplan undertakes long-range plans to provide a common vision for investment priorities involving regional transportation infrastructure during the plan period. The federal government mandates that, to receive funding, regions must make long-range plans.

Key Facts:

- Long-range plans are updated every 3-5 years and
- cover a period of at least 20 years.
- The current long-range plan update, Central Arkansas 2050, was adopted December 2018 by the Metroplan Board of Directors. Preparation for the next long-range plan will begin in 2020.

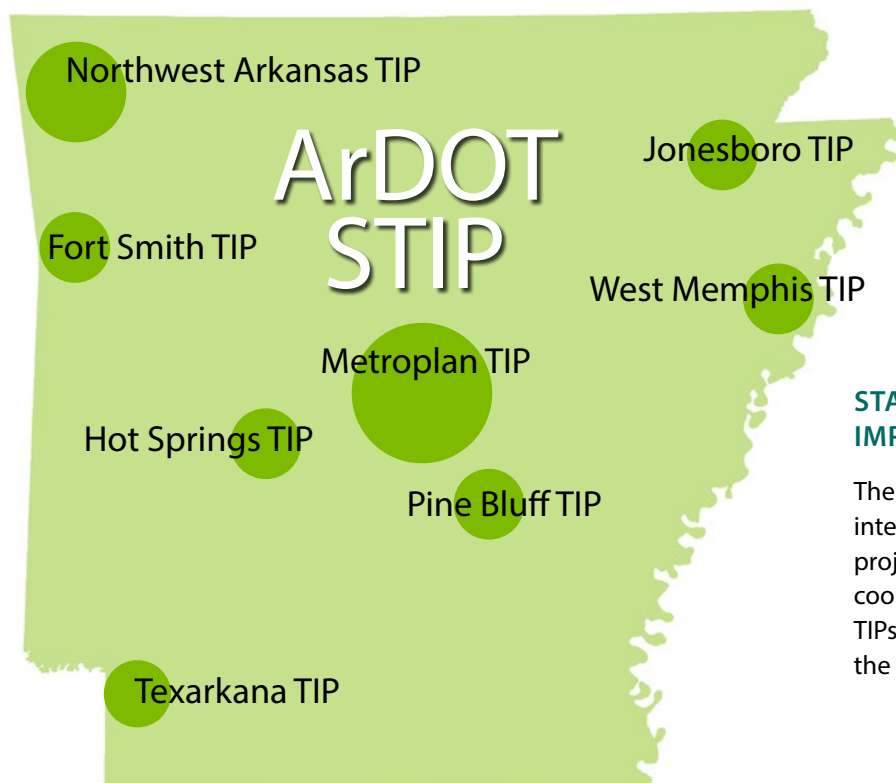


TRANSPORTATION IMPROVEMENT PROGRAM

The long-range transportation plan is implemented through the Transportation Improvement Program (TIP), which includes a list of transportation projects to fund over a three-year period in support of the long-range plan.

Key Facts:

- No federal transportation funds can be spent on a
- transportation project unless that project is on the TIP.
- The TIP is updated every 3-4 years.
- The current TIP covers Fiscal Years 2019-2022.
- The TIP applies to the Central Arkansas Regional Transportation Study (CARTS) area.
- The Agreed Upon List of Projects is established prior to each federal fiscal year and represents the first-year of the TIP, for which no additional action is needed.
- A map of the 2019-2022 TIP projects found on page 35.



STATEWIDE TRANSPORTATION IMPROVEMENT PROGRAM (STIP)

The STIP is a staged, multi-year, statewide intermodal program of transportation projects. The STIP must be developed in cooperation with the MPOs. The MPO TIPs must be incorporated directly into the STIP.

PLANS AND IMPLEMENTATION / SUPPORTING DOCUMENTS

Metropolitan Transportation Plan (MTP)

Long-range plan with a 20+ year horizon
Updated every 5 years

Transportation Improvement Program (TIP)

Short-range implementation plan
of MTP projects
Updated at least every 4 years

These additional documents support the MTP and TIP and are also required.

Public Participation Plan (3-P)

Unified Planning Work Program (UPWP)

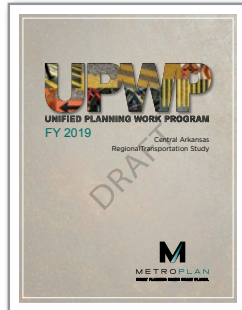
Annual List of Obligated Projects (ALOP)

Title VI Program and LEP Plan

The following documents are required and contribute to the foundation of metropolitan planning mandates:

Unified Planning Work Program (UPWP)

This document details the work that the MPO sets out to do each year. The UPWP describes each task to be undertaken by ArDOT, Rock Region METRO and the MPO during the coming State fiscal year (July 1 through June 30).



Public Participation Plan (3-P)

The PPP sets forth the policies and procedures for early public engagement in transportation plan development. The updated PPP must be adopted and published prior to the adoption of any plans developed under the FAST Act, and is subject to a 45-day public review and comment.

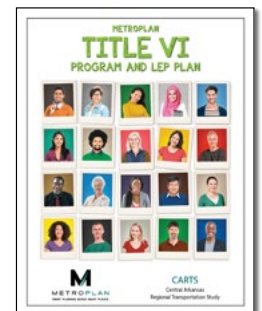


Annual List of Obligated Projects (ALOP)

This document is a companion of the TIP. It presents a list of projects in the CARTS area for which federal funds were obligated during the previous fiscal year. The ALOP must be published on the Metroplan website by December 31st of each calendar year; its availability is advertised in area newspapers.

Title VI Program and LEP Plan

A Title VI program is required of all MPOs, and is developed in accordance with the requirements of the Civil Rights Act of 1964 and additional nondiscrimination regulations. A Limited English Proficiency (LEP) Plan is also required as part of compliance.





- MEMBERS -

- COMMITTEE MEMBER ROSTERS
- BOARD MEMBER ROSTER

2019 REGIONAL ADVISORY COMMITTEES

LIVABLE COMMUNITIES

Samuel Adcock
Faulkner County
davidadcock81@yahoo.com

Krista Quinn
Faulkner County
krista.quinn@agriculture.arkansas.gov

Coreen Frasier
Pulaski County
fursecl@sbcglobal.net

Heather Davis
Pulaski County
heather@amr-architects.com

Karma Herzfeld
Saline County
karma.herzfeld@mottomortgage.com

Clara Nicclosi
Saline County
claraniclosi@remax.net

Chris Hancock
Create Little Rock
Pulaski County
chris.hancock@winrock.org

Brian Cotton
U of A Medical School
Pulaski County
cottenbrian@uams.edu

Patricia Blick
David Robinson
Quapaw Quarter Association
Pulaski County
patricia.blick@quapaw.com

Chris Kent
Argenta Downtown Council
Pulaski County
ckent@argentadc.org

Sherry Smith
Paula Sims
We Care Pulaski County
Pulaski County
wecarerec@sbcglobal.net

Lou Tobian
Amy Rossi
AARP
Pulaski County
ltobian@aarp.org

Patrick Stair
Carolyn Shearman
Sierra Club
Pulaski County
stair@aristotle.net

Moriah Bruner
UCA Center for Community and Economic
Development
Faulkner County
mbruner1@uca.edu

Isacc Sims
Conway Chamber of Commerce
Faulkner County
isaac@conwayarkansas.org

Karen James
Wade Knox Children's Advocacy
Lonoke County
kjames.wadecac@sbcglobal.net

Tiffany Dunn
Saline County Regional Solid Waste District
Saline County
tiffany@recyclesaline.org

ShaRhonda Love
Arkansas Minority Health Commission
Pulaski County
ShaRhonda.Love@arkansas.gov

Ericka Benedicto
Little Rock Racial and Cultural Diversity
Commission
Pulaski County
ebenedicto@littlerock.gov

Becky Adams
Toney Bailey
Arkansas Department of Health
becky.adams2@arkansas.gov

Michael Grappe
Andrea Hopkins
Arkansas Department of Environmental
Quality
grappem@adeq.state.ar.us

James Walden
City of Conway
Faulkner County
James.Walden@cityofconway.org

Ryan Biles
City of Lonoke
Lonoke County
ryanb@scmarchitects.com

Walter Malone
City of Little Rock
Pulaski County
WMalone@littlerock.gov

Truett Smith
City of Bryant
Saline County
tsmith@cityofbryant.com

Mary Myers
City of Shannon Hills
Saline County
shannonhillstreasurer@aristotle.net

Jon Honeywell
City of Little Rock
Pulaski County
JHoneywell@littlerock.gov

Justin Avery
Rock Region METRO
javery@rrmetro.org

Anthony Hunter
Arkansas Department of Transportation
anthony.hunter@ardot.gov
TBA
Clinton National Airport

TBA
Little Rock Port Authority

2019 REGIONAL ADVISORY COMMITTEES

ECONOMIC VITALITY

Rene Henderson
Faulkner County
abcgirlgrandma@gmail.com

Brent Birch
Pulaski County
Brent@lrtechpark.com

Ben France
Pulaski County
bfrance@littlerockchamber.com

Pam Jones
Pulaski County
pam@thec3firm.com

Todd Larson
Pulaski County
tl@nlredc.com

Miguel Lopez
Pulaski County
Miguel.Lopez@firstcommunity.net

Darrell Montgomery
Pulaski County
mrdlmontgomery@yahoo.com

Brent Jones
Saline County
brent.j.jones@edwardjones.com

Joshua Ang Price
Pulaski County
Joshua.ang.price@gmail.com

Rick Swinton
Pulaski County
rswinton@gmail.com

Gary James
Benton Chamber of Commerce
Saline County
gjames@bentonchamber.com

Colleen Carr
Sherwood Chamber of Commerce
Pulaski County
ccarr@sherwoodchamber.net

Elyse Cullen
Emily Chambers
North Little Rock Young Professionals
Pulaski County
elyse@nlrchamber.org

Gabe Holmstrom
Downtown Little Rock Partnership
Pulaski County
gholmstrom@downtownlr.com

Buckley O'Mell
Little Rock Regional Chamber of Commerce
Pulaski County
bomell@littlerockchamber.com

Corey Parks
Conway Development Corporation
Faulkner County
corey@conwayarkansas.org

Rodney Larsen
Central Arkansas Planning Development
District
Lonoke County
rodney.larsen@capdd.org

Clint O'Neal
Arkansas Economic Development
Commission
coneal@arkansasedc.com

Matthew Smock
Little Rock Air Force Base
matthew.smock@us.af.mil

Chad Young
City of Cabot
Lonoke County
ctyoung@wddarchitects.com

Shane Ramsey
Pulaski County
sramsey@pulaskicounty.net

Jason Temple
Hot Springs Village
Saline County
jtemple@hsvpoa.org

Chris Wilbourn
City of North Little Rock
Pulaski County
cwilbourn@nlr.ar.gov

Angela Patterson
City of Mayflower
Saline County
angela.patterson@mayflowerar.org

Jamie Collins
City of Little Rock
Pulaski County
gcollins@littlerock.gov

Becca Green
Rock Region METRO
bgreen@rrmetro.org

Sunny Farmahan
Arkansas Department of Transportation
sunny.farmahan@ardot.gov

TBA
Clinton National Airport

TBA
Little Rock Port Authority

2019 REGIONAL ADVISORY COMMITTEES

TRANSPORTATION SYSTEMS

Jeremy Chrysler
Faulkner County
jchrysler@gmail.com

Charles Cummings
Lonoke County
cargosolutions@msn.com

Chris East
Pulaski County
ceast@cromwell.com

Jeff Hathaway
Faulkner County
jeff@hathawaygroup.com

Lamont Cornwell
Saline County
director@scedc.org

Marvin Jones
Lonoke County
mwjones12@gmail.com

David O'Neal
Arkansas Trucking Association
Pulaski County
davidoneal@arkansastrucking.com

Stacey Tierney
Bicycle Advocacy of Central Arkansas
Pulaski County
bicycleadvocacypresident@gmail.com

Maret Cahill Wicks
United Way of Central Arkansas
Faulkner County
m.cahill@uwcark.org

Deidre Smith
Arkansas Waterways Commission
Pulaski County
deidre.smith@arkansas.gov

Joe Jacobs
Michael Sprague
Arkansas Parks and Tourism
joe.jacobs@arkansas.gov

Brandon Morris
Tyson Moeller
Union Pacific Rail Road
bdmorris@up.com

Finley Vinson
City of Conway
Faulkner County
Finley.Vinson@cityofconway.org

Brett McDaniel
Faulkner County
brett.mcdaniel@conwaycorp.com

Steve Brummett
Pulaski County
sbrummett@pulaskicounty.net

Mike Hood
City of Little Rock
Pulaski County
mhood@littlerock.gov

Marty Polk
Saline County
marty.polk@salinecounty.org

Tim Tyler
City of Greenbrier
Saline County
timy@tylergroup.net

David Passmore
City of Shannon Hills
Saline County
shannonhillspubworks@aristole.net

Lance Reynolds
Faulkner County
lance.reynolds@faulknercounty.org
Richard Penn
City of Sherwood
Pulaski County
rpenn@cityofsherwood.net

Ronny Loe
City of Little Rock
Pulaski County
rloe@littlerock.gov

Scott Grummer
City of Maumelle
Pulaski County
sgrummer@maumelle.org

Shawn Spencer
City of North Little Rock
Pulaski County
sspencer@nlr.ar.gov

Jimmy Oakley
City of Jacksonville
Pulaski County
joakley@cityofjacksonville.net

Donna Bowers
Rock Region METRO
dbowers@rrmetro.org

Sunny Farmahan
Arkansas Department of Transportation
sunny.farmahan@ardot.gov

TBA
Clinton National Airport

TBA
Little Rock Port Authority

2019 METROPLAN BOARD OF DIRECTORS

PRESIDENT

Mayor Joe Smith
City of North Little Rock

VICE PRESIDENT

Judge Doug Erwin
Lonoke County

SECRETARY/TREASURER

Judge Jim Baker
Faulkner County

Mayor Paul Mitchell
City of Alexander

Mayor Bob Johnson
City of Jacksonville

Mayor Terry Mizer
City of Wrightsville

Mayor Bernadette Chamberlain
City of Austin

Mayor Frank Scott, Jr.
City of Little Rock

Mayor Preston Scroggin
City of Vilonia

Mayor Eddie Jones
City of Bauxite

Mayor Trae Reed, III
City of Lonoke

Judge Randy Pruitt
Grant County

Mayor Tom Farmer
City of Benton

Mayor Caleb Norris
City of Maumelle

Judge Barry Hyde
Pulaski County

Mayor Allen E. Scott
City of Bryant

Mayor Randy Holland
City of Mayflower

Judge Jeff Arey
Saline County

Mayor Ken Kincade
City of Cabot

Mayor Jonathon Hawkins
City of Mount Vernon

Ms. Jessie Jones
Arkansas Department
of Transportation

Mayor David Graf
City of Cammack Village

Mayor Mike Kemp
City of Shannon Hills

Charles Frazier
Rock Region METRO

Mayor Bart Castleberry
City of Conway

Mayor Joe Wise
City of Sheridan

Mr. Bryan Day
Little Rock Port Authority

Mayor Sammy Hartwick
City of Greenbrier

Mayor Virginia Young
City of Sherwood

Mr. Bryan Malinowski
Clinton National Airport

Mayor Sam Higdon
City of Guy

Mayor Michael Nash
City of Traskwood

Mayor Roy H. Carman
City of Haskell

Mayor Charles Gastineau
City of Ward

Mr. Keith Keck
Hot Springs Village

Mayor Terry Don Robinson
City of Wooster



- ORGANIZATION -

- ORGANIZATION
- REGIONAL ADVISORY COMMITTEES (RAC)
- METROPLAN MEETINGS
- TRANSPORTATION PLANNING ORGANIZATIONAL CHART

ORGANIZATION

Metroplan's Board of Directors is composed of member jurisdictions' mayors and county judges or their designated representatives. Additionally, the Arkansas Department of Transportation (ArDOT) is represented by one voting member, as are the Little Rock Port Authority, Bill and Hillary Clinton National Airport, and the regional transit authority, Rock Region METRO.

Smaller communities are represented on the Small Cities Council, which also has a vote on the full Board.




An Executive Committee of the Board, composed of county judges of all member counties, mayors of large and medium municipalities, and two mayors appointed by the Small Cities Council, engages directly with the Regional Advisory Committees.

The Board of Directors sets policy, which is carried out by staff and the advisory committees.

Three Regional Advisory Committees recommend and respond to the Metroplan Board and Executive Committee on matters impacting Metroplan and the MPO. The committees are structured to reflect the federally mandated Planning Factors, as well as locally developed goals from the long range metropolitan transportation plan. Each committee examines issues from the unique perspective and expertise of its members.

Individuals and organizations are selected for positions on committees through an application process and are approved by the Board.

Regional Advisory Committees

	Economic Vitality is concerned with matters of industry, commerce, workforce and regional-scale economic growth.
	Transportation Systems encompasses issues of safety, efficiency, technology, and design along with their interactions with the natural and physical built environment.
	Livable Communities deals with regional development, transit readiness and livability, as implemented throughout central Arkansas' small communities and neighborhoods.

Metroplan Meetings

Unless announced otherwise, all Metroplan Board, Executive Committee, and Regional Advisory Committee meetings are held at the Pulaski County Regional Center, 501 West Markham Street, Little Rock.

All Metroplan meetings are open to the public. Meeting dates are posted on the Metroplan website and notices are sent out at least one week prior to a regularly scheduled meeting.

Metroplan's **Board of Directors** (MPO) meets at 10:00 A.M. on the last Wednesday of every other month, beginning in February, except in December, when a holiday schedule is announced.

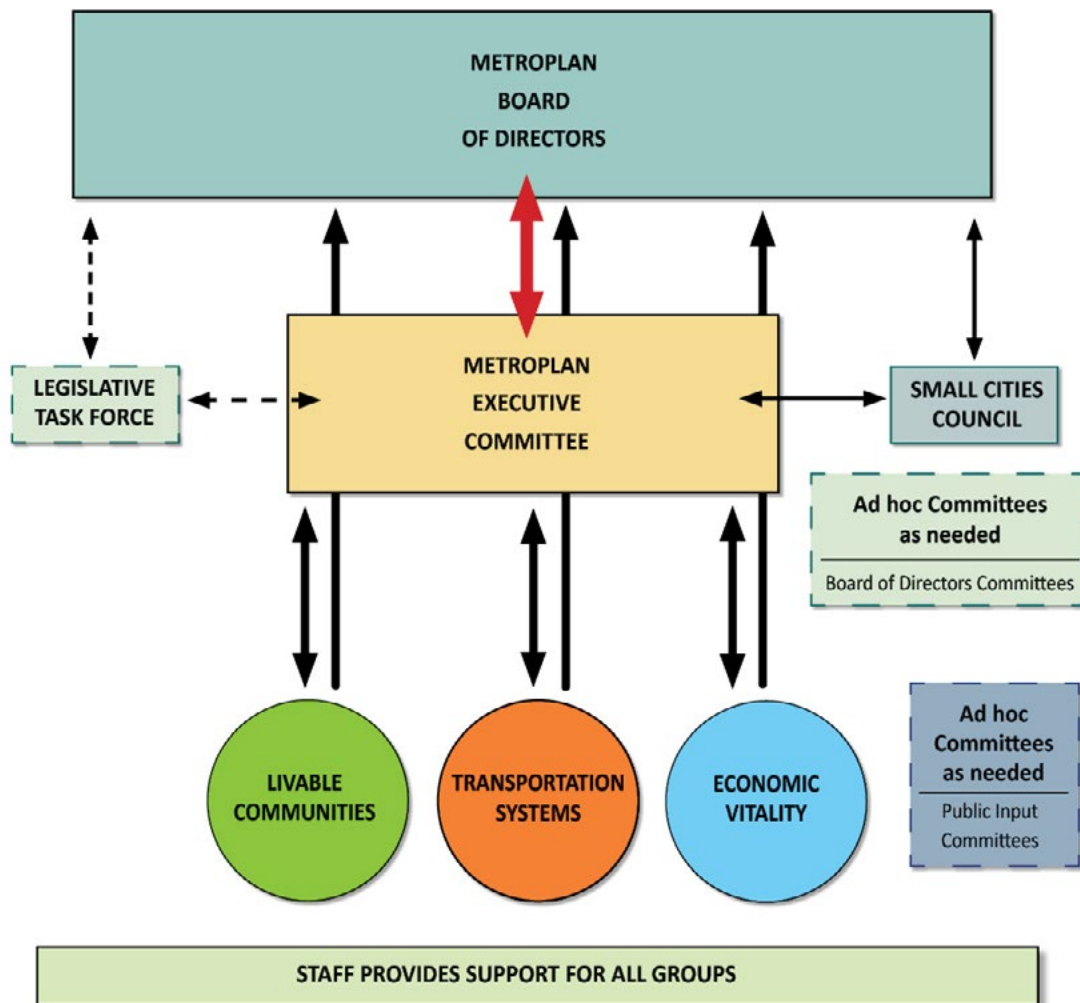
Executive Committee (ExC) meets at 10:00 A.M. on the last Wednesday of every other month, beginning in January, except in November, when a holiday schedule is announced.

The **Small Cities Council** (SCC) meets at 11:00 A.M. on the last Wednesday of every other month, beginning in January, except in November, when a holiday schedule is announced.

Each of the three **Regional Advisory Committees**—Transportation Systems, Livable Communities, and Economic Vitality—meets at least four times a year (quarterly) and more often during the development of the long-range plan. Meeting dates and times will be established and announced at least one week prior to meeting.

AdHoc Committees are occasionally designated, and meetings called as needed. As with all other meetings, subcommittee meetings are advertised in compliance with the Arkansas Freedom of Information Act.

TRANSPORTATION PLANNING ORGANIZATIONAL CHART

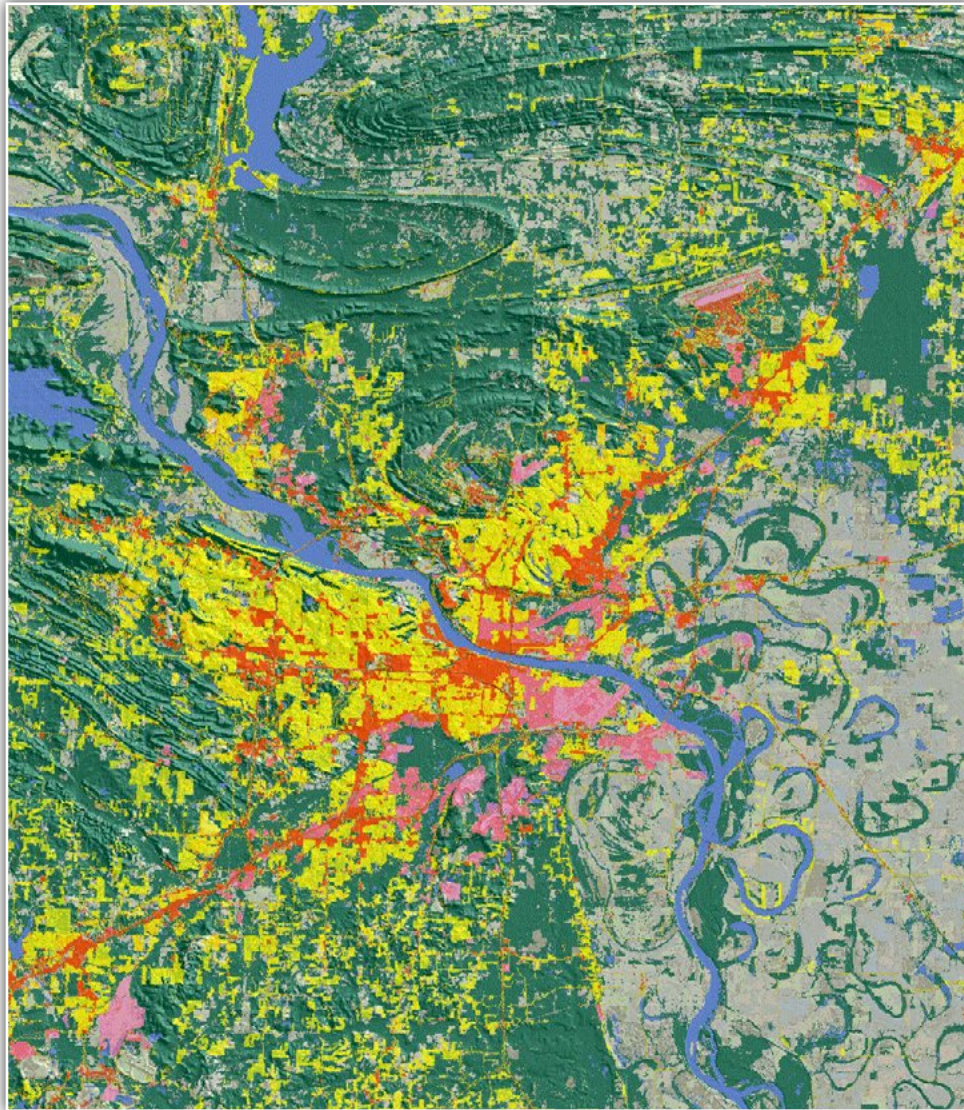


2019–2020 Executive Committee

Judge Jim Baker, Faulkner County
 Judge Doug Erwin, Lonoke County
 Judge Barry Hyde, Pulaski County
 Judge Jeff Arey, Saline County
 Mayor Tom Farmer, City of Benton
 Mayor Ken Kincade, City of Cabot
 Mayor Bart Castleberry, City of Conway
 Mayor Sammy Hartwick, City of Greenbrier
 Mayor Bob Johnson, City of Jacksonville
 Mayor Frank Scott, Jr., City of Little Rock
 Mayor Joe Smith, City of North Little Rock
 Mayor Mike Kemp, City of Shannon Hills
 Mayor Virginia Young, City of Sherwood

2019–2020 Small Cities Council

Mayor Paul Mitchell, City of Alexander
 Mayor Bernadette Chamberlain, City of Austin
 Mayor Eddie Jones, City of Bauxite
 Mayor David Graf, Cammack Village
 Mayor Sammy Hartwick, City of Greenbrier
 Mayor Sam Higdon, City of Guy
 Mayor Roy Carman, City of Haskell
 Mayor Trae Reed, City of Lonoke
 Mayor Randy Holland, City of Mayflower
 Mayor Jonathon Hawkins, City of Mount Vernon
 Mayor Mike Kemp, City of Shannon Hills
 Mayor Michael Nash, City of Traskwood
 Mayor Preston Scroggin, City of Vilonia
 Mayor Charles Gastineau, City of Ward
 Mayor Terry Don Robinson, City of Wooster
 Mayor Terry Mizer, City of Wrightsville



- STAFF -

- METROPLAN STAFF ROSTER
- METROLAN STAFF ORGANIZATION CHART
- METROPLAN STAFF BIOS

METROPLAN STAFF ROSTER 2019

EXECUTIVE DIRECTOR, TAB TOWNSELL DEPUTY DIRECTOR, CASEY COVINGTON

ADMINISTRATION

Tab Townsell	Executive Director	ttownsell@metroplan.org
Casey Covington	Deputy Director	ccovington@metroplan.org
Cindy Segebarth	Administrator	csegebarth@metroplan.org

PLANNING

Casey Covington, PE, AICP	CARTS Study Director	ccovington@metroplan.org
Lynn Bell	Graphics Specialist/Trails Coordinator	lbell@metroplan.org
Hans Haustein	GIS Analyst/Planner/Performance Measure Coordinator	hhaustein@metroplan.org
Daniel Holland	Comprehensive Planner II/Jump Start Project Manager	dholland@metroplan.org
Jonathan Lupton, AICP	Senior Planner for Publications	jlupton@metroplan.org
Susan Markman, AICP, CGF	Senior Planner for Policy/Title VI Coordinator	smarkman@metroplan.org
Jeff Runder	Senior Planner for Technical Analysis	jrunder@metroplan.org
Allen Skaggs	Planning Technician	askaggs@metroplan.org
La'Kesha Stewart	Public Outreach Planner	lstewart@metroplan.org

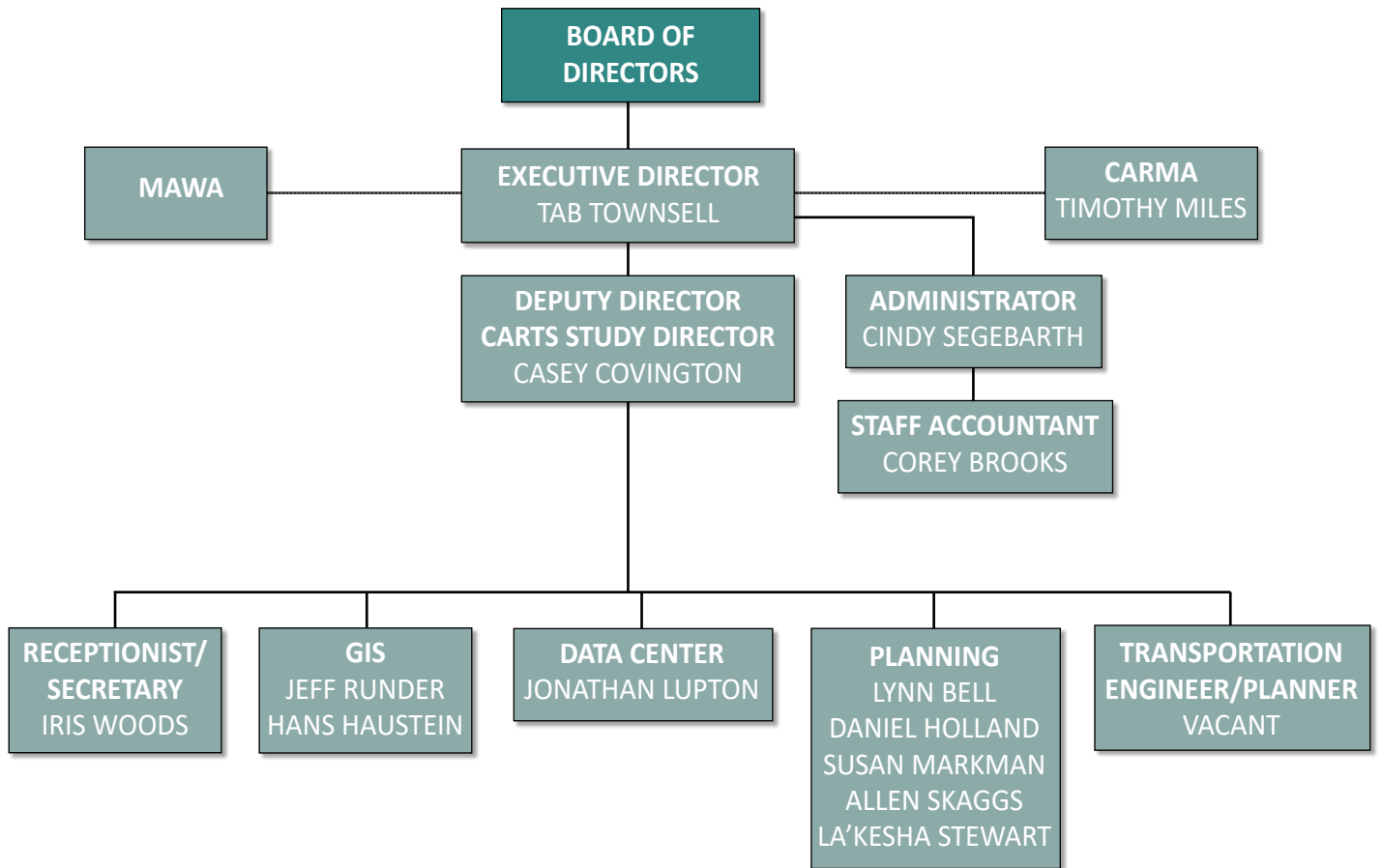
FINANCE & SUPPORT

Iris Woods	Receptionist/Secretary	iwoods@metroplan.org
Corey V. Brooks	Staff Accountant	cbrooks@metroplan.org

METROPLAN STAFF BY SPECIALITY AREA

TRANSPORTATION ENGINEERING/CARTS	GIS, MAPPING, ZONING
<ul style="list-style-type: none"> Casey Vacant 	<ul style="list-style-type: none"> Jeff Hans
GRAPHICS, WEB SITE	DEMOGRAPHICS, STATISTICS/CENSUS
<ul style="list-style-type: none"> Lynn Allen 	<ul style="list-style-type: none"> Jonathan
PLANNING TECHNICAL ASSISTANCE	COMMUNITY OUTREACH
<ul style="list-style-type: none"> Daniel Susan La'Kesha 	<ul style="list-style-type: none"> Susan La'Kesha
ADMINISTRATIVE, HR/PERSONNEL	CLERICAL, ACCOUNTING
<ul style="list-style-type: none"> Cindy 	<ul style="list-style-type: none"> Iris Corey

2019 METROPLAN STAFF ORGANIZATIONAL CHART



METROPLAN ADMINISTRATIVE STAFF



TAB TOWNSELL

Executive Director
Masters in Business Administration
Bachelor of Science

Tab Townsell served as the Mayor of Conway, Arkansas from 1999 until 2016, and under his leadership Conway experienced 40 percent growth. During his time in office, Townsell focused on urban planning, transportation improvements, and community and economic development.



CASEY R. COVINGTON

Deputy Director/CARTS Study Director
Transportation Engineer
Master of Science in Civil Engineering
Professional Engineer (PE)
American Institute of Certified Planners (AICP)

As CARTS Study Director, Casey Covington oversees the long-range transportation plan, transportation improvement plan (TIP), Unified Planning Work Program (UPWP), the Technical Coordinating Committee (TCC), and Regional Planning Advisory Committee (RPAC).

As a transportation engineer, his responsibilities include traffic forecasting, monitoring project development, overseeing transportation studies, reviewing roadway plans, conducting corridor studies, development of access management plans, and supervising the Congestion Management Process. Covington also provides limited technical assistance to cities regarding roadway improvements, plans, and traffic calming.



CINDY SEGEBARTH

Administrator
Bachelor of Science in Accounting

Cindy Segebarth supervises all accounting functions at Metroplan including supervising the accounting and clerical staff, maintains and performs all human resource duties and purchasing functions, maintains project books and all documentation applicable to each project. As administrator, she prepares monthly and quarterly financial and claim reports, develops and prepares yearly budgets for the operation of the organization.

She works closely with auditors to make sure that Metroplan implements all future and necessary requirements regarding the operation of the organization.

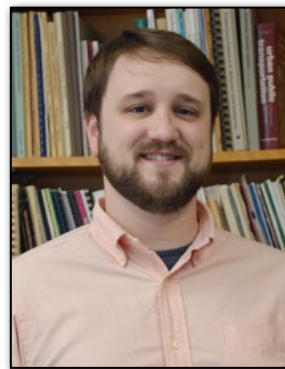
METROPLAN PROFESSIONAL STAFF



LYNN BELL

Graphics Specialist/Trails Coordinator
Bachelor of Arts in Graphic Design

Lynn Bell designs and produces reports, presentations, publications and promotional materials for Metroplan and its member entities. Lynn assists with ideas, photos and illustrations for the Metrotrends newsletters, the *Demographic Review and Outlook* and the *Economic Review and Outlook*. Lynn also coordinates meetings, activities, and promotion for the Arkansas River Trail and the Southwest Trail task forces.



DANIEL HOLLAND

Comprehensive Planner II/
Jump Start Project Manager
Bachelor of Science in Geography
Masters in Community and
Economic Development

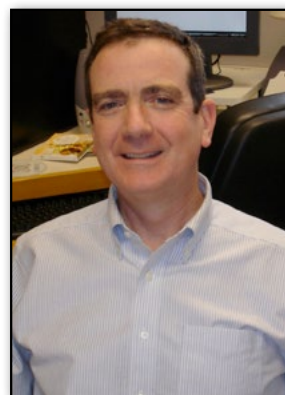
Daniel Holland floats between city and transportation planning. He acts as project lead for both the Long Range Transportation Plan and the Jump Start Program. He assists partner jurisdictions with land use and development planning policy, outreach, and other technical support. He also writes and edits for Metroplan publications such as the Annual Report and Central Arkansas Livability Index. Daniel sits on several committees such as Healthy Active Arkansas, US Bike Routes and Hub Communities, and Ozone Action Days, eager to plan a healthier, more mobile, and connected Central Arkansas.



HANS HAUSTEIN

GIS Analyst/Planner
Performance Measure Coordinator
Bachelor of Arts in Geography
Masters in GIS

As a Geographic Information System (GIS) Planner and Analyst, Hans Haustein is focused on GIS Mapping projects including zoning, land use, and street center line mapping. He also provides technical assistance, special data requests, GPS field surveys, remote sensing, and overall plan development. Hans coordinates with ArDOT on performance measures and roadway safety and is a member of the Arkansas Highway Safety Steering Committee and the Arkansas Traffic Records Coordinating Committee.



JONATHAN LUPTON

Senior Planner for Publications
Masters in Geography
Masters in Community and Regional Planning
American Institute of Certified Planners (AICP)

Jonathan Lupton develops socioeconomic data for transportation modeling including projections of population and employment for the region, down to the TAZ (Traffic Analysis Zone) level. Lupton coordinates the research and writing of Metrotrends newsletters, the *Demographic Review and Outlook* and the *Economic Review and Outlook* as well as data requests from Metroplan members concerning demographic and economic questions and data needs. Population estimate work includes compiling building permit records from member jurisdictions, as well as economic data on construction industry trends. Lupton also coordinates and supervises production of the Metroplan Annual Report

METROPLAN PROFESSIONAL STAFF



**SUSAN SIERRA
MARKMAN**

Senior Planner for Policy/Title VI Coordinator
Master of Arts in Community Planning/
Historic Preservation
American Institute of Certified Planners (AICP)
Certified Group Facilitator (CGF)

Susan Markman is the staff liaison to the transit agency and works with communities to provide technical assistance on a variety of planning projects, especially walkability assessments. Like other staff, she is often assigned "special tasks" and has worked with member jurisdictions and the Board to facilitate a variety of projects.



ALLEN SKAGGS

Planning Technician

Allen Skaggs provides technical support for planning documents. As GIS Planning Technician, he coordinates desktop mapping for Metroplan members. He also provides IT support for the organization including website and computer maintenance as well as network administration.



JEFF RUNDER

Senior Planner for Technical Analysis
Masters in Geography
American Institute of Certified Planners (AICP)

Jeff Runder maintains Metroplan's Geographic Information System (GIS), analyzes spatial data to aid the ongoing planning process, and provides cartographic services and spatial decision support to member jurisdictions. Other duties include: GPS surveying, remote sensing, video production, network maintenance, and providing technical assistance to member jurisdictions.



LA'KESHA STEWART

Public Outreach Planner
Masters in Planning

La'Kesha is responsible for Metroplan's public outreach and social media. She assists in the development of the short and long-range plans. La'Kesha is also responsible for the development and update of the Public Participation Plan. She provides technical assistance to member governments on planning products. La'Kesha is a member of the National and local chapter of the American Planning Association (APA), and Public Relations Society of America (PRSA). She also sits on the Diversity and Inclusion Committee for PRSA.

METROPLAN SUPPORT STAFF



IRIS WOODS

Secretary/Receptionist
Associate in Business Technology
Bachelors in Business Management



Iris Woods performs all Metroplan's secretarial and clerical duties including scheduling meetings, maintaining lists, filing, and general office management. She also assists staff with a wide variety of transportation project needs.



COREY V. BROOKS, CPA

Staff Accountant
Bachelor of Arts in Accounting
Master of Arts in Accounting

Corey Brooks performs day to day accounting functions related to cash receipts, accounts payable, general journal entries and payroll. She works closely with the Administrator to assist in providing management with accurate and up-to-date financial information.



- APPENDICES -

- GLOSSARY
- METROPLAN AWARDS

GLOSSARY OF ACRONYMS

3-P	Public Participation Plan
AICP	American Institute of Certified Planners
ArDOT	Arkansas Department of Transportation
ALOP	Annual List of Obligated Projects
AMPO	Association of Metropolitan Planning Organizations
APA	American Planning Association
ARRA	American Recovery and Reinvestment Act
AULP	Agreed Upon List of Projects
CAAA	Clean Air Act Amendments
CARTS	Central Arkansas Regional Transportation Study
FAST Act	Fixing America's Surface Transportation Act
FHWA	Federal Highway Administration
FTA	Federal Transit Administration
GIS	Geographic Information System
ISTEA	Intermodal Surface Transportation Efficiency Act (1990)
LEP	Limited English Proficiency
LRAFB	Little Rock Airforce Base
LRMTP	Long-Range Metropolitan Transportation Plan
MAPC	Metropolitan Area Planning Commission
MAP 21	Moving Ahead for Progress in the 21 st Century
MAWA	Mid-Arkansas Water Alliance
MPO	Metropolitan Planning Organization
MSA	Metropolitan Statistical Area
MTP	Metropolitan Transportation Plan (also called LRMTP)
PPP	Public Participation Plan
PSA	Public Service Announcement
RAC	Regional Advisory Committees
RPAC	Regional Planning Advisory Council
RRM	Rock Region METRO
SAFETEA-LU	Safe, Accountable, Flexible, Efficient Transportation Equity Act: A Legacy for Users
SCC	Small Cities Council of the Metroplan Board of Directors
STIP	Statewide Transportation Improvement Program
TAC	Transportation Advisory Council (now RPAC)
TCC	Technical Coordinating Committee
TEA-21	Transportation Equity Act for the 21 st Century
TIP	Transportation Improvement Program
UPWP	Unified Planning Work Program
VPS	Visual Preference Survey

A more extensive list of acronyms and definitions is available on the Metroplan website: <http://metroplan.org/sites/default/files/media/Glossary2015.pdf>

METROPLAN AWARDS

- 2018 AdFed Award (ADDY), Bronze Level – Publication Cover Design (Metro Trends Economic Review and Outlook 2017: The Changing Face of Retail) Lynn Bell
- 2016 Jack Evans Regional Leadership Award Jim McKenzie, Richard Magee
- 2016 AMPO's Ronald F. Kirby Award for Outstanding Individual Leadership Jim McKenzie
- 2016 American Planning Association's Bill Bonner Award for Outstanding Contributions to the Planning Profession
Jim McKenzie, Richard Magee
- 2016 AdFed Award (ADDY), Bronze Level – Publication Cover Design (Metro Trends Economic Review and Outlook 2015: The Future of Work in Central Arkansas) Lynn Bell
- 2016 IABC Bronze Quill Award – Event Planning (Metroplan's 60th Anniversary) Lynn Bell, Cindy Segebarth and other staff
- 2015 AdFed Award (ADDY) Bronze Level – Audio/Visual (Imagine Central Arkansas capstone video)
Metroplan staff and The Design Group
- 2015 APA Arkansas Chapter – Achievement in Technology Award (Central Arkansas Livability Index website)
Lynn Bell and Urban Interactive Studio
- 2015 APA Arkansas Chapter – Achievement in Comprehensive Planning Award (Imagine Central Arkansas)
Metroplan staff and Gresham Smith & Partners
- 2015 IABC Bronze Quill Award of Merit – Government Communication Program (Imagine Central Arkansas)
Metroplan staff, Gresham Smith & Partners and The Design Group
- 2015 IABC Bronze Quill Award of Excellence – Audio/Visual (Faces of Central Arkansas video)
Metroplan staff and The Design Group
- 2014 IABC Bronze Quill Award of Excellence – Financial Communication (Metro Trends Economic Review and Outlook)
Jonathan Lupton and Lynn Bell
- 2014 IABC Bronze Quill Award of Merit – Multi-Audience Communication (Imagine Central Arkansas)
Metroplan staff and The Design Group
- 2014 IABC Bronze Quill Award of Merit – Community Relations (Imagine Central Arkansas)
Metroplan staff, Gresham Smith & Partners, The Design Group, Urban Interactive Studios
- 2013 Little Rock Regional Minority Supporting Business of the Year
- 2011 IABC Award of Merit – Publication Design (Metro Trends Economic Review and Outlook) Lynn Bell
- 2011 PRSA Award – Social Media (Grass Roots, Growing our Green Agenda) Jasmin Moore and Thoma Thoma
- 2011 Hermes Gold Award – Public Participation (Grass Roots, Growing our Green Agenda)
Jasmin Moore and Thoma Thoma
- 2010 PR News Non-Profit – National Finalist, Green PR Award (Grass Roots, Growing our Green Agenda)
Jasmin Moore and Thoma Thoma
- 2009 PRSA PRISM Award – Public Affairs (Operation Bottleneck) Metroplan staff, Thoma Thoma
- 2007 APA Arkansas Chapter – Unique Contribution to Planning (Glossary of Transportation Terms)
Susan Markman (Dollar) and Jean Dahms
- 2007 APA Arkansas Chapter – Achievement in Plan Implementation (Walkable Cabot)
Susan Markman (Dollar) and Jean Dahms
- 2007 APA Arkansas Chapter – Achievement in Comprehensive Planning (Benton Planning Studies Report)
John Hoffpauer
- 2007 FHWA Exemplary Human Environment Initiative (Big Dam Bridge)
- 2006 UALR Organization of the Year (Mid-Arkansas Water Alliance)
- 2000 Association of Metropolitan Planning Organizations Outstanding MPO over 200,000 –
National Award for Outstanding Leadership in Metropolitan Transportation Planning



METROPLAN

SMART PLANNING MAKES SMART PLACES.