

# SOUTH LOOP STUDY: Frequently Asked Questions

Southeast Pulaski County



## What is the purpose of the South Loop Study?

The South Loop Study aims to increase safety and transportation flow in the southeast Pulaski County area. The study will consider the current and future need, and potential routes, for a new “southern loop” roadway that would connect I-440 with I-530 through the Port of Little Rock, a regional industrial and multimodal freight hub.

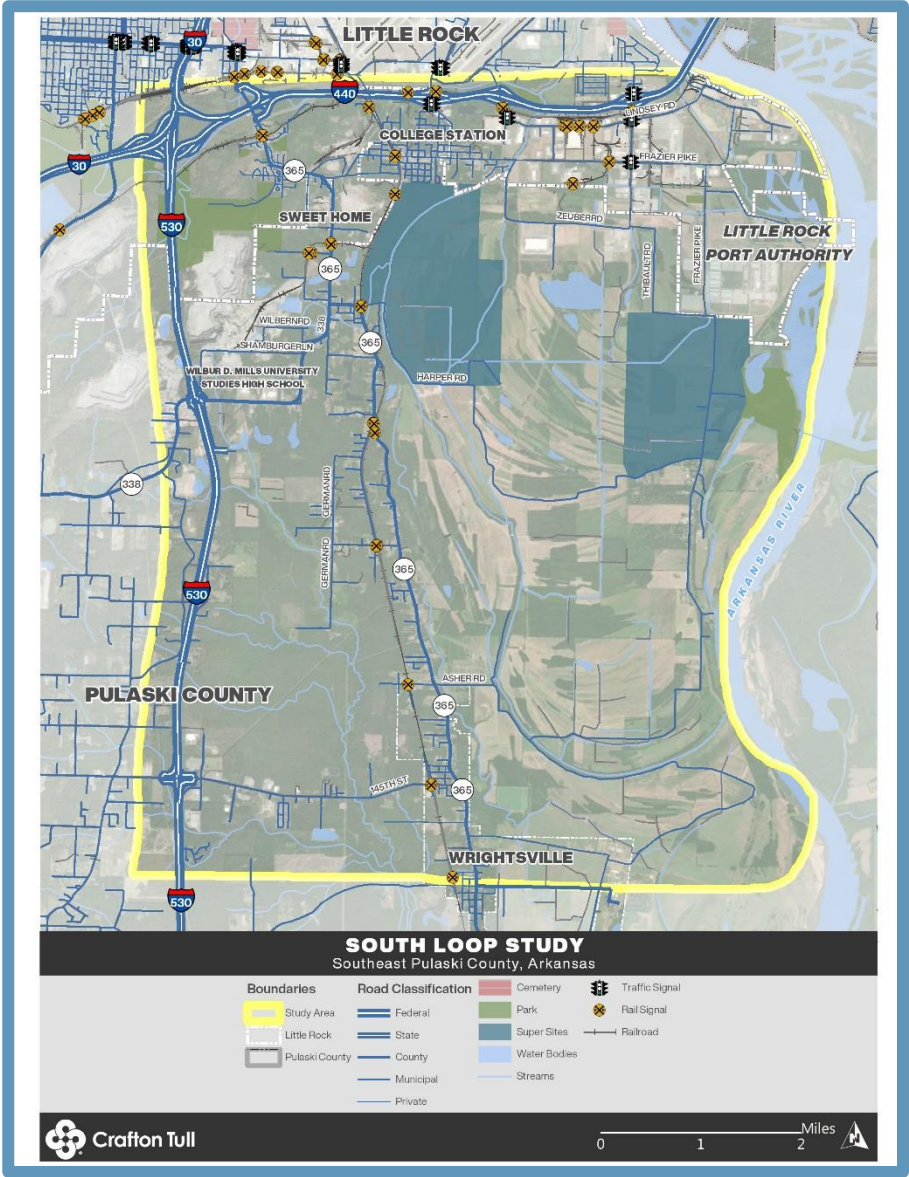
## Where is the Study Area?

The study area is east of Interstate 530 and south of Interstate 440, primarily agricultural fields leading to the Arkansas River. Little Rock, Pulaski County, Wrightsville, Sweet Home and College Station are located within the study area.

## What is the importance of the South Loop?

The Port of Little Rock is a vital economic hub not just for Central Arkansas, but for the entire state. Located between two major interstates for truck transportation, on the Arkansas River for water transportation via barge, near the Little Rock National Airport for air freight transportation, and with railroad servicing the Port Industrial Park, the Port is well-positioned to move freight of all kinds in support of local industries.

- Currently 136,400 total vehicles travel within the study area each day, many of which carry raw materials for manufacturing or exports to other states or countries.
- Entrance and exit into the Port of Little Rock is currently limited to two exits from I-440, located less than a mile from each other.
- In the event of major traffic incidents near these exits, all movement in and out of the Port is at risk of complete blockage near critical rail lines.
- A loop connecting the Port of Little Rock to I-530 to the south would provide access for trucks en route to the port from the south, or southbound on I-530.
- Providing another critical connection in and out of the Port increases safety for drivers by redirecting some traffic onto the South Loop that would otherwise travel on the two interstates.



# SOUTH LOOP STUDY: Frequently Asked Questions

Southeast Pulaski County



## STAKEHOLDER ENGAGEMENT PROCESS

The South Loop Study is guided by a steering committee representing Metroplan, the City of Little Rock, Pulaski County, the Port of Little Rock, and state economic development officials.

Stakeholders such as Port employees, bicycling advocates, residents of surrounding communities, and others will be notified of a series of public meetings.

Input and data received from public meetings will help identify the best alignment for the South Loop and identify additional information.

## QUICK FACTS



\*Source: Little Rock Port Authority

\*\*Source: Metroplan

For more information, contact:

Brad Peterson  
Project Manager  
501-664-3245 | brad.peterson@craftontull.com

## KEY CONSIDERATIONS



PROJECT SCHEDULE	2022	2023			
	Fall	Winter	Spring	Summer	Fall
Data Collection & Identification, Public & Stakeholder Engagement	◆		◆		◆
Purpose & Need Statement & Alternative Development		◆			
Multimodal, Alternative Analysis & Recommended Alternative			◆		
Report Preparation, Review & Approval				◆	◆

◆ = Steering Committee Meeting

◆ = Public & Stakeholder Meeting