



Crafton Tull



PORT OF LITTLE ROCK SOUTH LOOP STUDY

METROPLAN & LITTLE ROCK PORT AUTHORITY

MEETING AGENDA & PURPOSE



Agenda

- Study Background
- Existing Conditions Review
- Future Conditions Discussion
- Alternative Development
- Alternative Evaluation/
Recommended Alternative
- Engagement Activities

Purpose

- Facilitate discussion with stakeholders to obtain useful and relevant information
- Verification of project purpose and need
- Identify opportunities and constraints for studied alignments
- Generate support and stimulate advocacy for the project.

PROJECT PARTNERS



Agency Representatives

Metroplan

Port of Little Rock

Pulaski County

Greater Little Rock Chamber

Little Rock Planning

City of Wrightsville

Little Rock Public Works

Kelley Commercial Partners

FHWA Arkansas Office



STUDY AREA



The study area consists of approximately 40.2 square miles and includes:

- Little Rock Port Industrial Park
- City of Little Rock
- City of Wrightsville
- College Station & Sweet Home Communities
- Unincorporated areas of Pulaski County

Study area borders are:

- North: I-440
- West: I-530
- South: 145th Street / Pratt Road
- East: Arkansas River



ABOUT THE STUDY



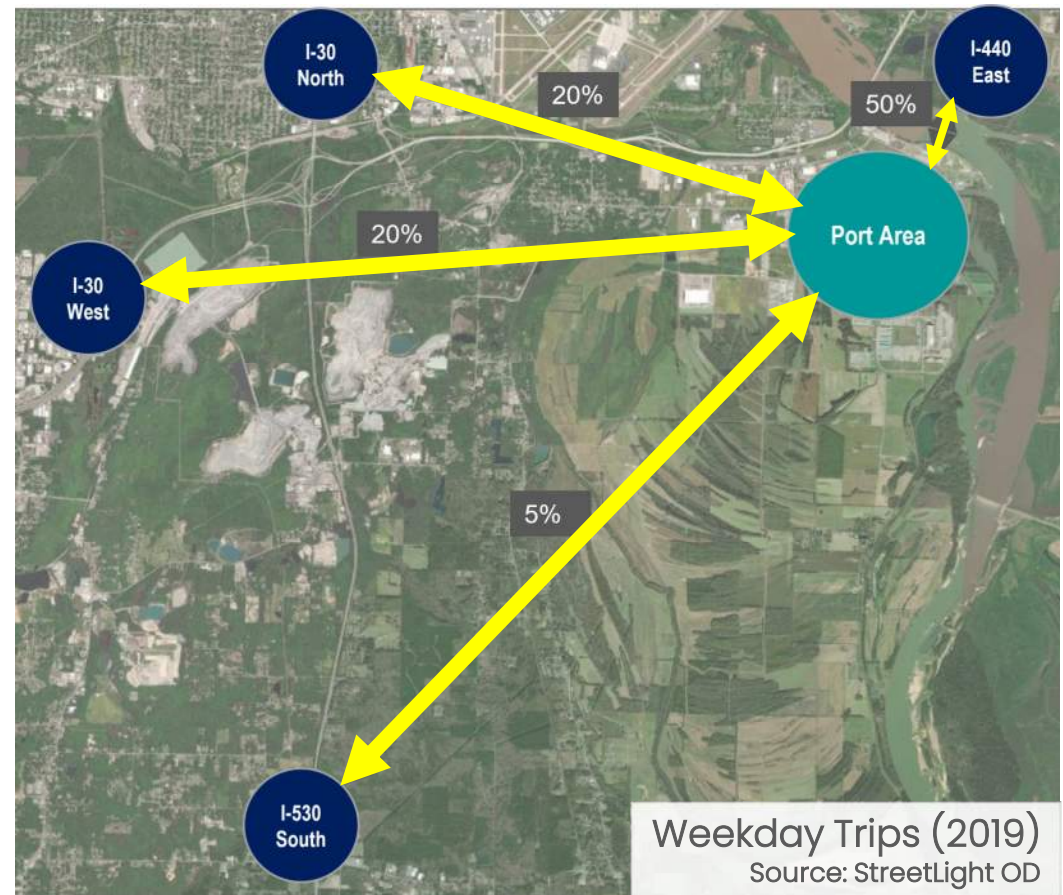
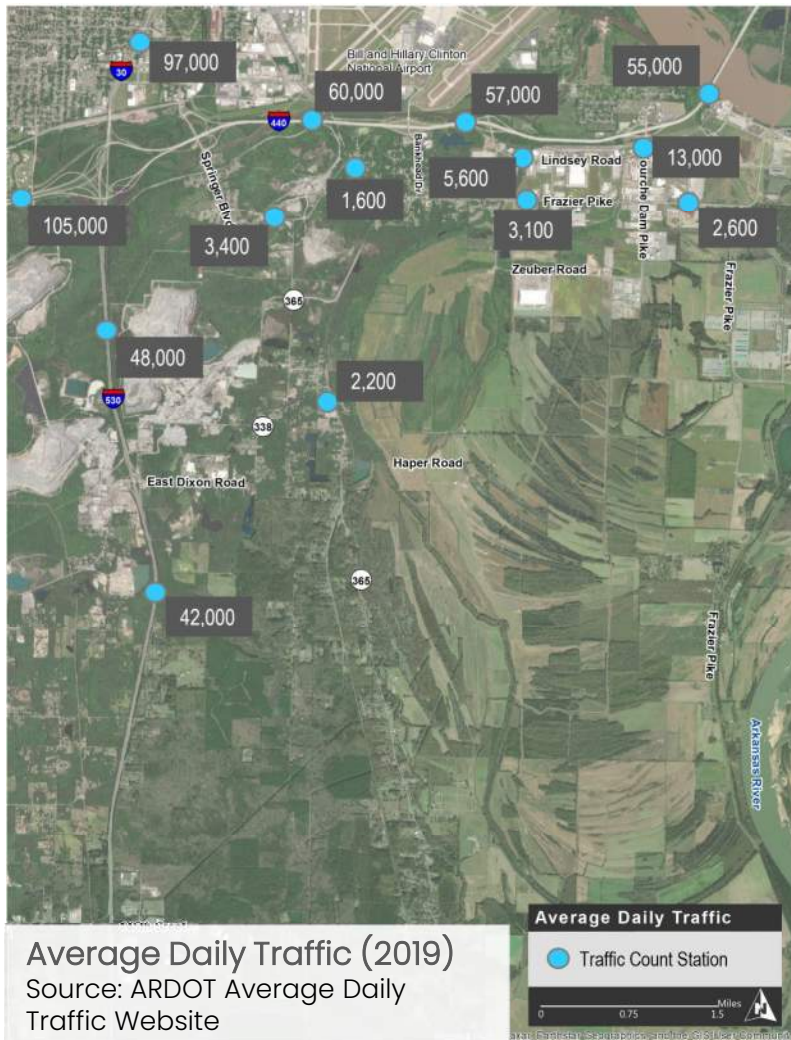
Purpose & key considerations of the study:

The study will consider the need and potential routes, for a new “southern loop” roadway that would connect I-440 with I-530 through the Port of Little Rock

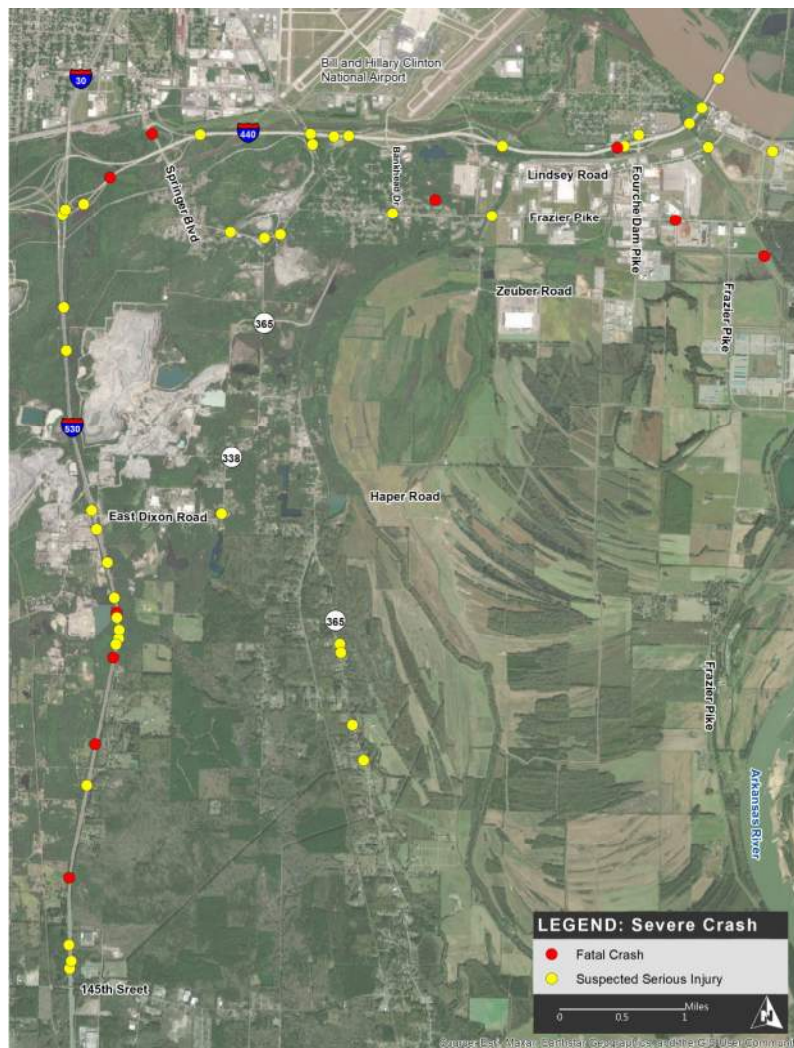
- Accommodate growth and **improve connectivity**
- Improve/maintain demand on existing facilities
- Improve heavy truck and rail **safety**
- Enhance multimodal facilities
- Increase **economic vitality**
- Preservation and enrichment of existing communities/environment



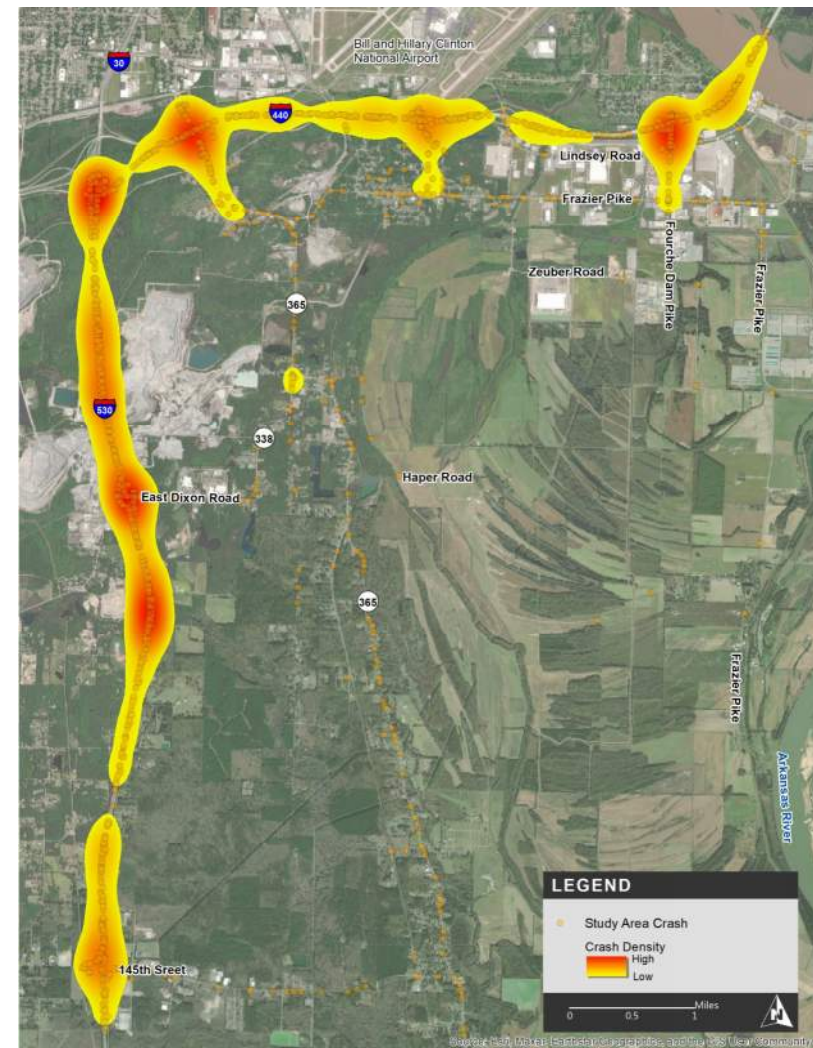
EXISTING CONDITIONS: TRAFFIC



EXISTING CONDITIONS: CRASHES



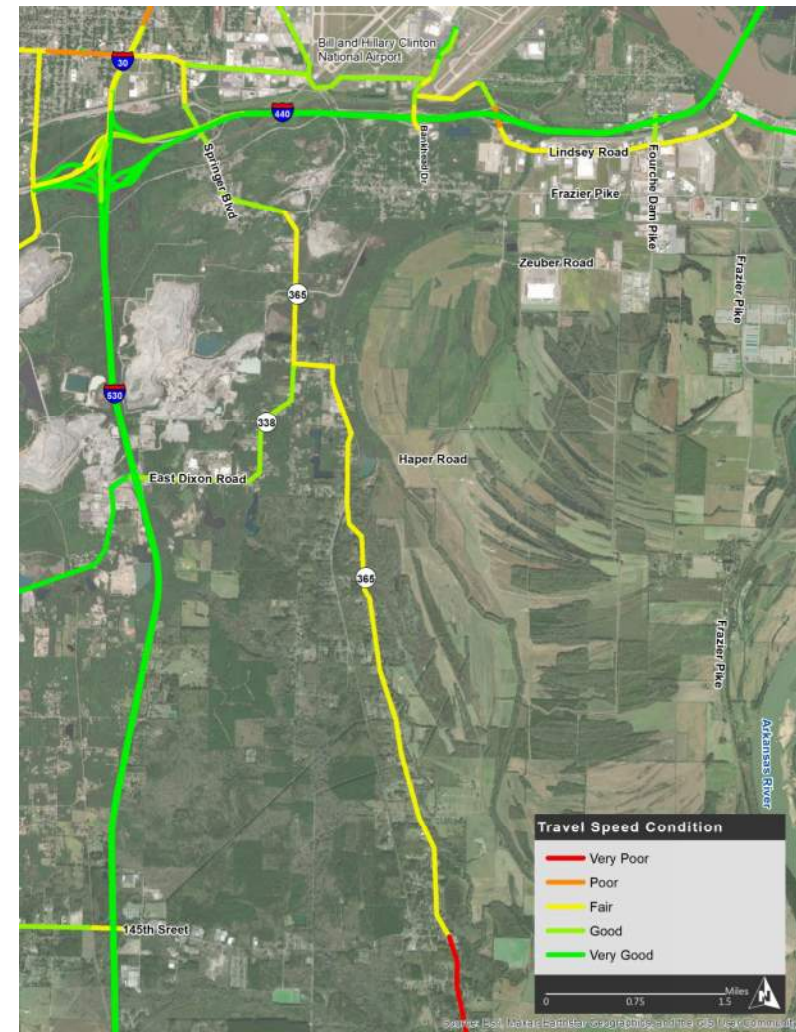
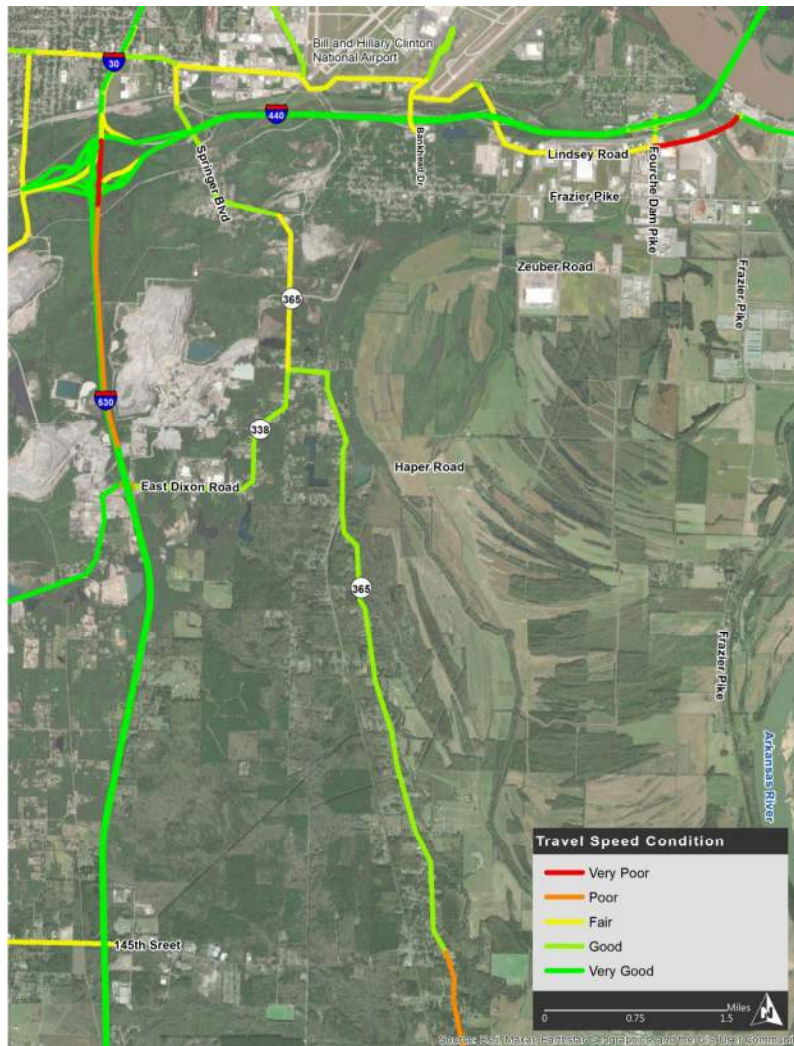
Source: ArDOT (2017 – 2021)



EXISTING CONDITIONS: TRAVEL SPEED



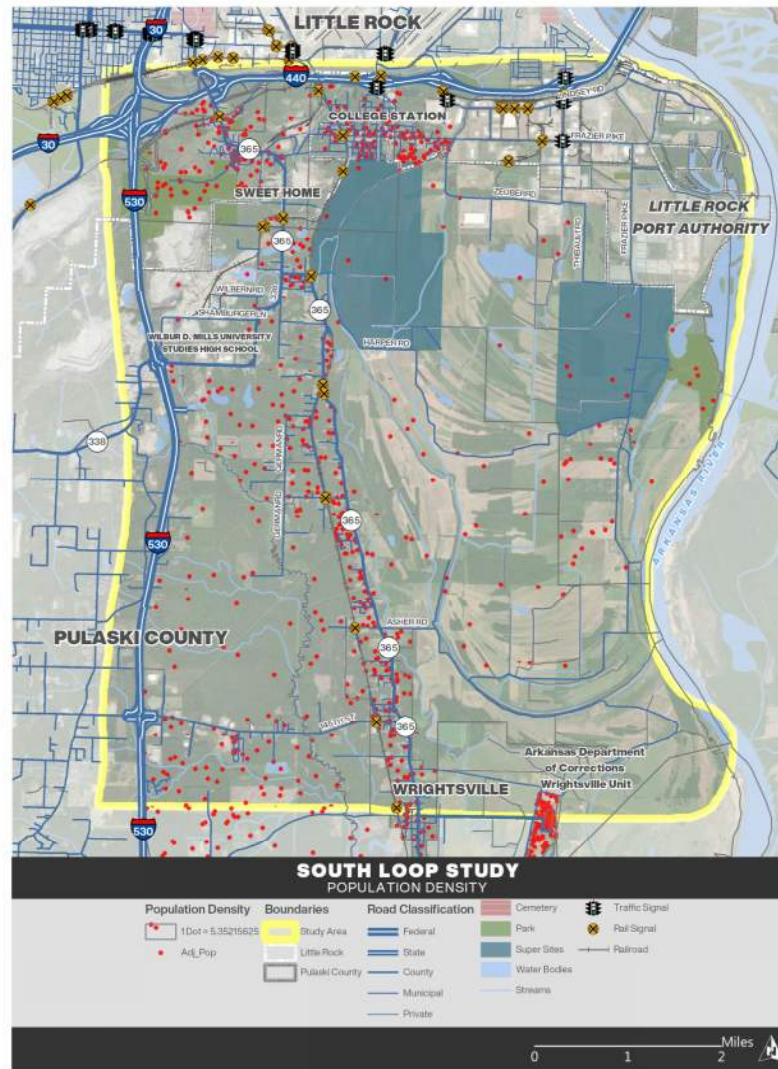
MB



EXISTING CONDITIONS: POPULATION



1 DOT = 5 PEOPLE

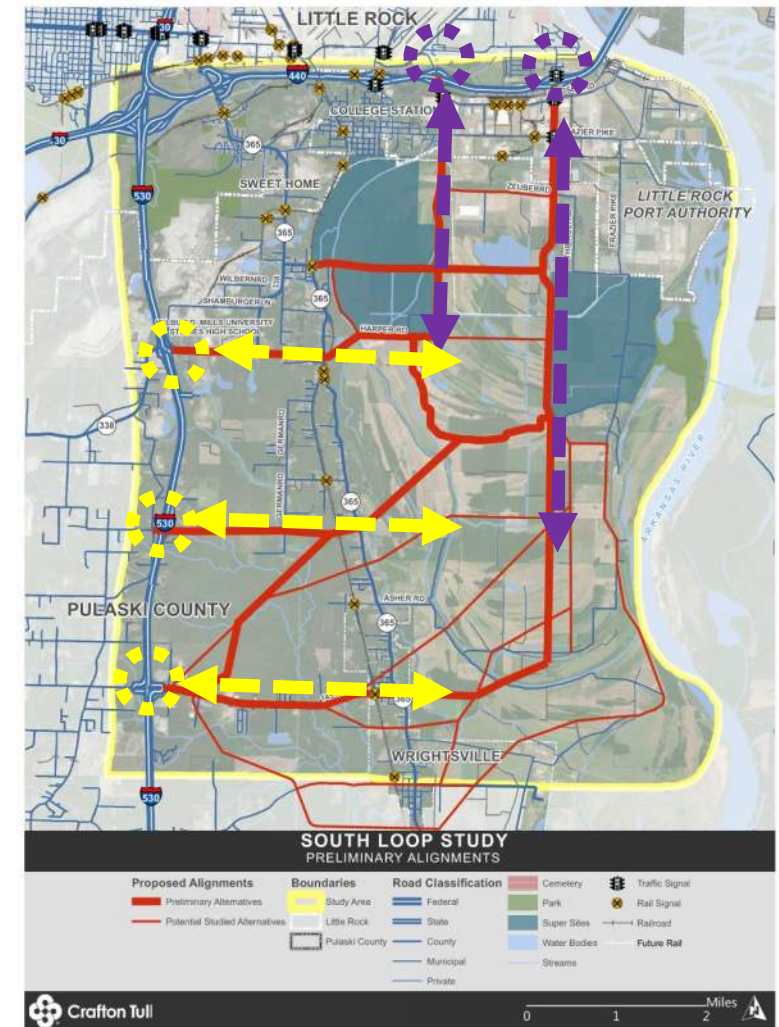


ALTERNATIVE DEVELOPMENT



STUDIED ROUTE ALTERNATIVES

- Selection of five (5) route alternatives to be evaluated based on:
 - Corridor Traffic and Safety
 - Mobility and Connectivity
 - Economic Impact
 - Engineering Design
 - Environmental and Community Impacts

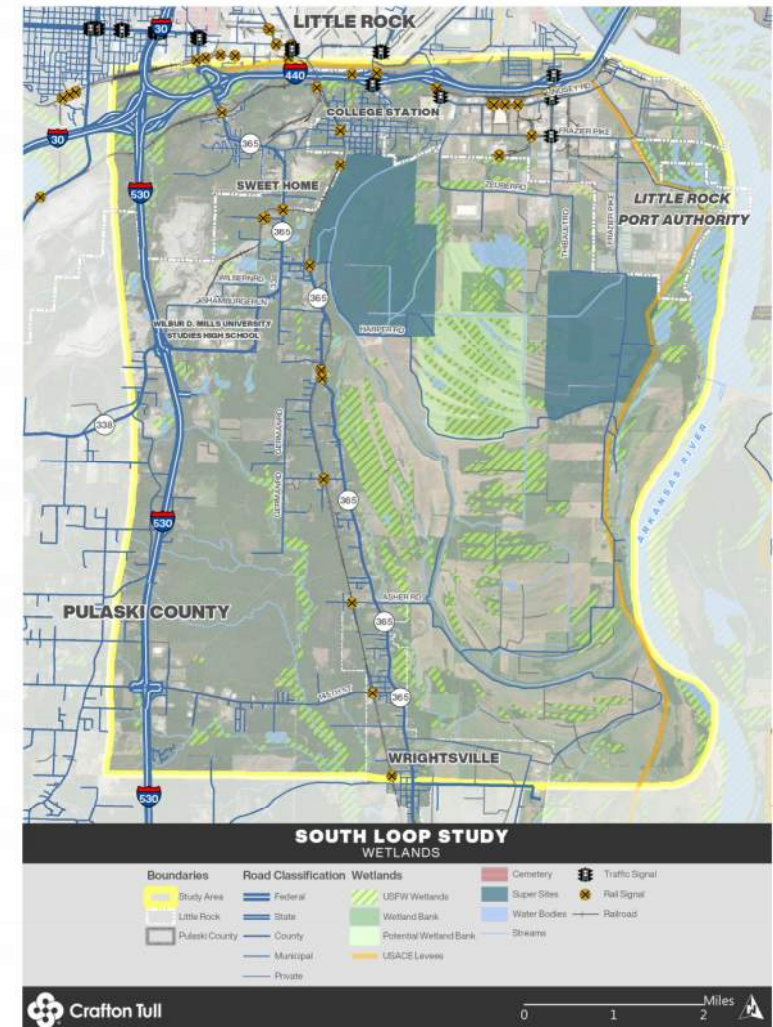


ALTERNATIVE EVALUATION



ENVIRONMENTAL AND COMMUNITY IMPACTS

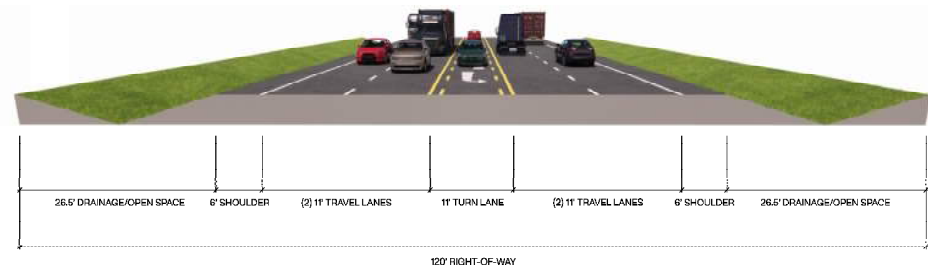
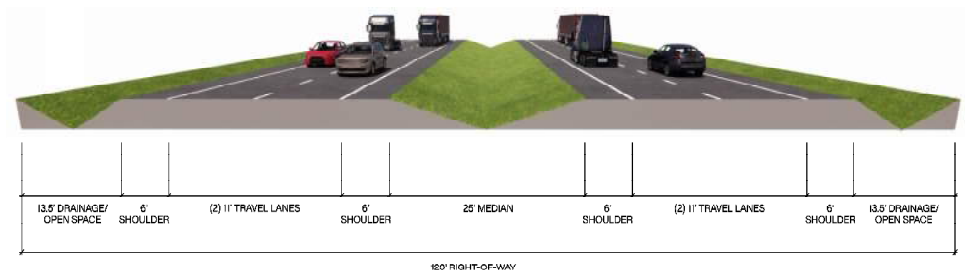
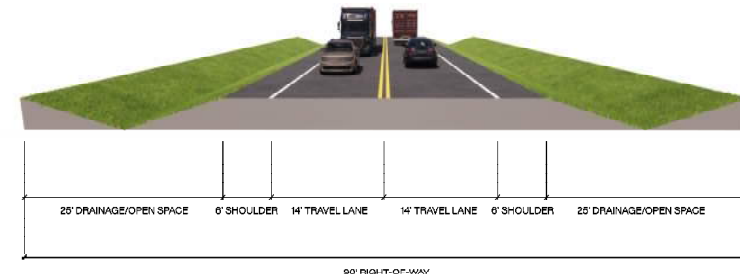
- Wetlands & Aquatic Resources
- Floodplains & Drainage Facilities
- Cultural Resources
- Community Facilities
- Residential & Business Communities
- Connection to Planned Developments
- Opposition to Project or Alternative Alignments



RECOMMENDED ALTERNATIVE



- Preferred Alignment & Sections
- Intersections & Rail Crossings
- Phases & Cost Estimates
- Cost-Benefit Analysis



ENGAGEMENT



WE WANT TO HEAR FROM YOU!

- Prioritization Board
- Comment Cards
- Study Area Maps
- Flip Chart/White Board





Crafton Tull



PORT OF LITTLE ROCK SOUTH LOOP STUDY

METROPLAN & LITTLE ROCK PORT AUTHORITY