

Central Arkansas Transportation Efficiency Program

Presented by Brittany Nichols

Sustainable Transportation & Energy Ambassador

bnichols@metroplan.org | 501.379.1113



Climate Pollution Reduction Grant (CPRG)

Reducing Emissions through Transportation Infrastructure

- **EV Fleet Transition Rebates**

Replace gas/diesel powered vehicles with electric vehicles (EVs)

- **Level 2 EV Charger Installation Rebates**

Install public or fleet-serving Level 2 charging stations

- **LED Streetlight Conversion Rebates**

Upgrade aging fixtures to energy-efficient LED technology

Transportation is a Major Source of Local Emissions

The Transportation Efficiency Measure helps local governments:

1. Reduce Fuel Consumption
2. Lower Operating Costs
3. Improve Air Quality
4. Modernize Public Infrastructure
5. Demonstrate Leadership in Clean Transportation

CPRG Program Targets

- 60 Fleet vehicles replaced with EV equivalents
- 136 Level 2 EV Chargers installed
- 4,033 streetlights converted to LED

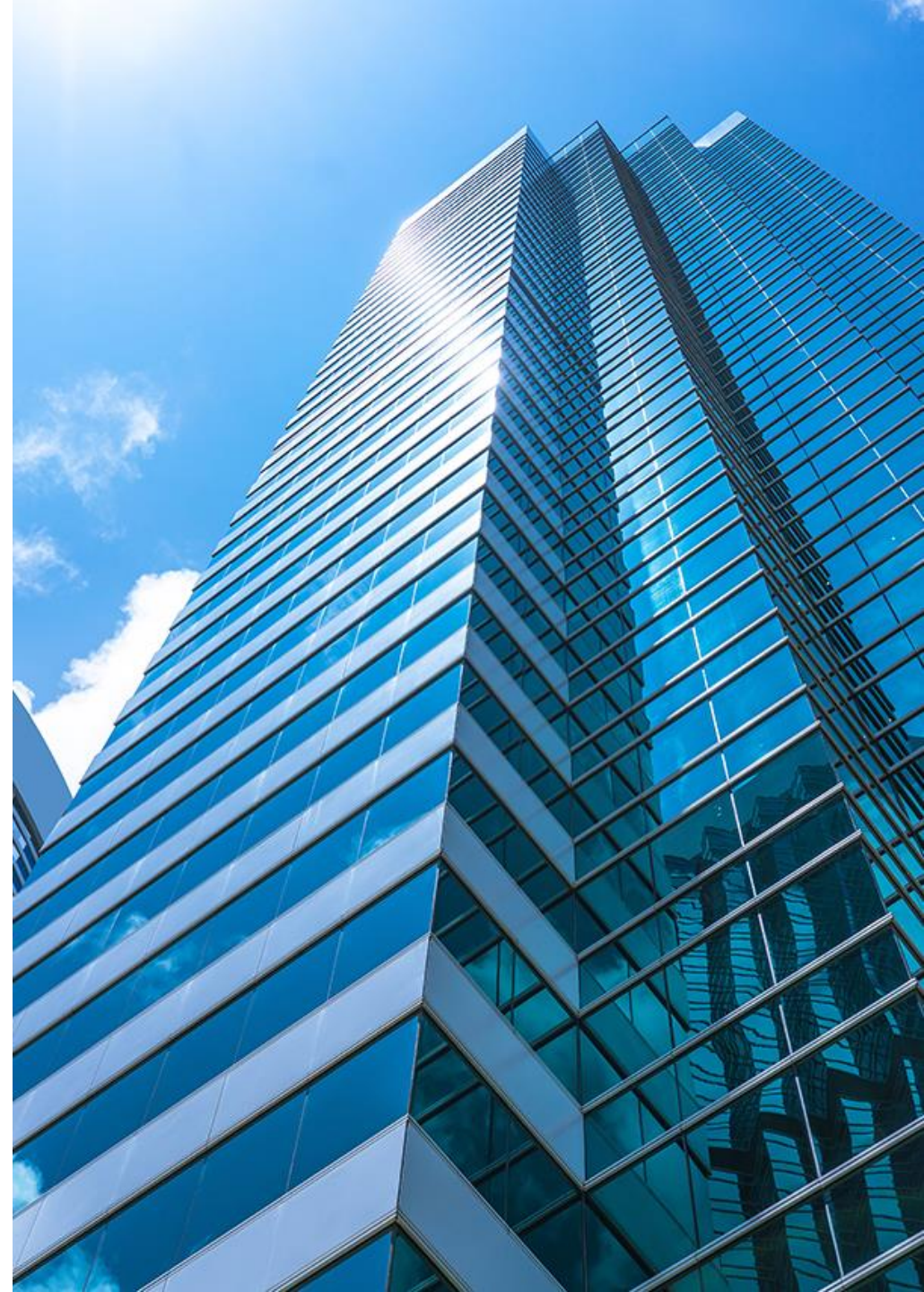
Eligible Counties in Central AR

- Pulaski
- Faulkner
- Saline
- Lonoke
- Perry
- Grant



Eligible Entities

- City Governments
- County Governments
- Government Partners (Quasi – Gov)
- Qualified Nonprofit Partners



EV Fleet Transition Rebates

Electrify Public Fleets

- \$10,000 per new EV sedan or SUV
- \$15,000 per new EV truck or police vehicle
- \$4,000 per used EV

Justification required for trucks and specialty vehicles



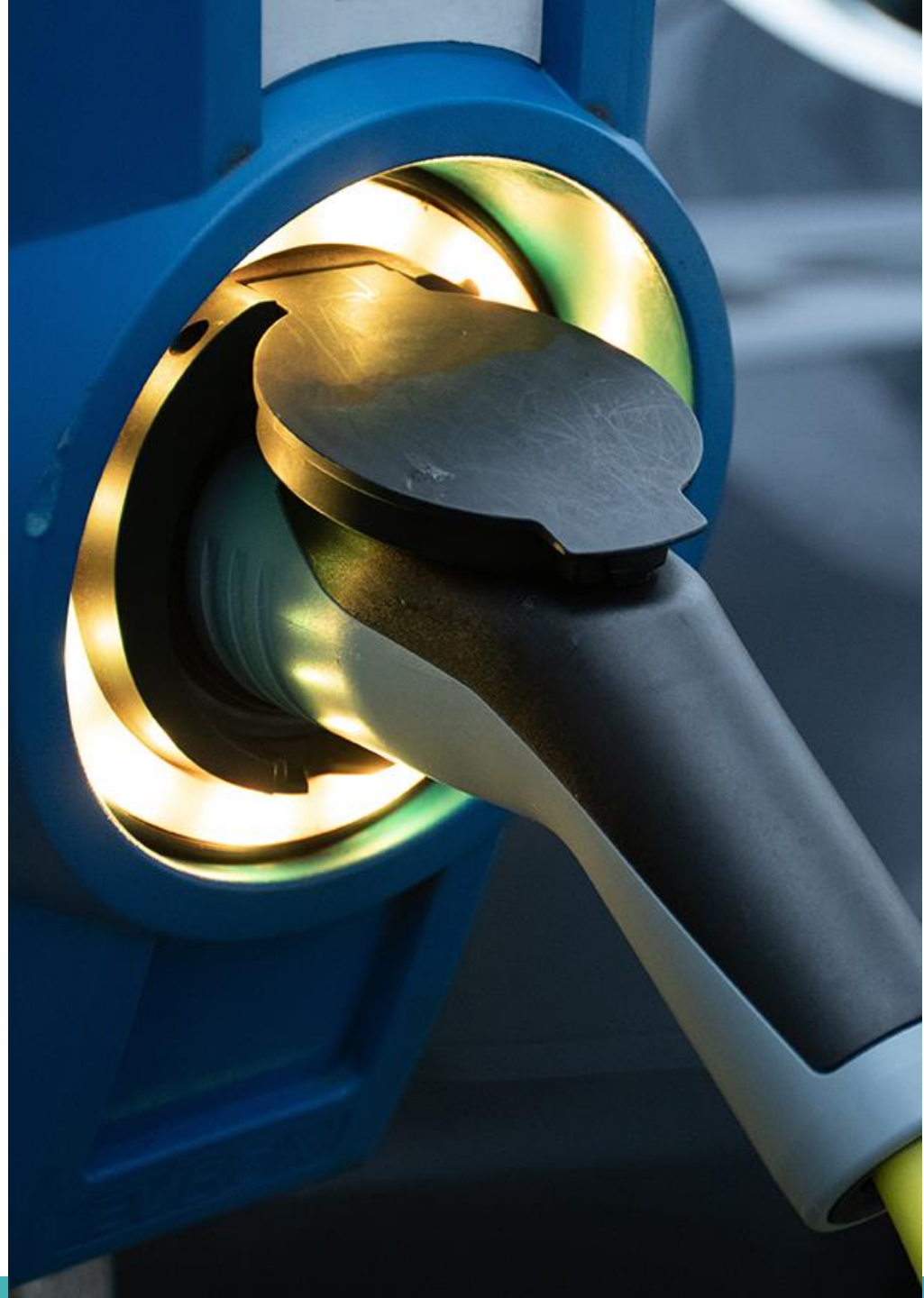
Level 2 EV Charger Rebates

Expand Charging Access

- Public Chargers
- Fleet Chargers
- Workplace Chargers

Single Port Charger = \$7,250

Dual Port Charger = \$14,500

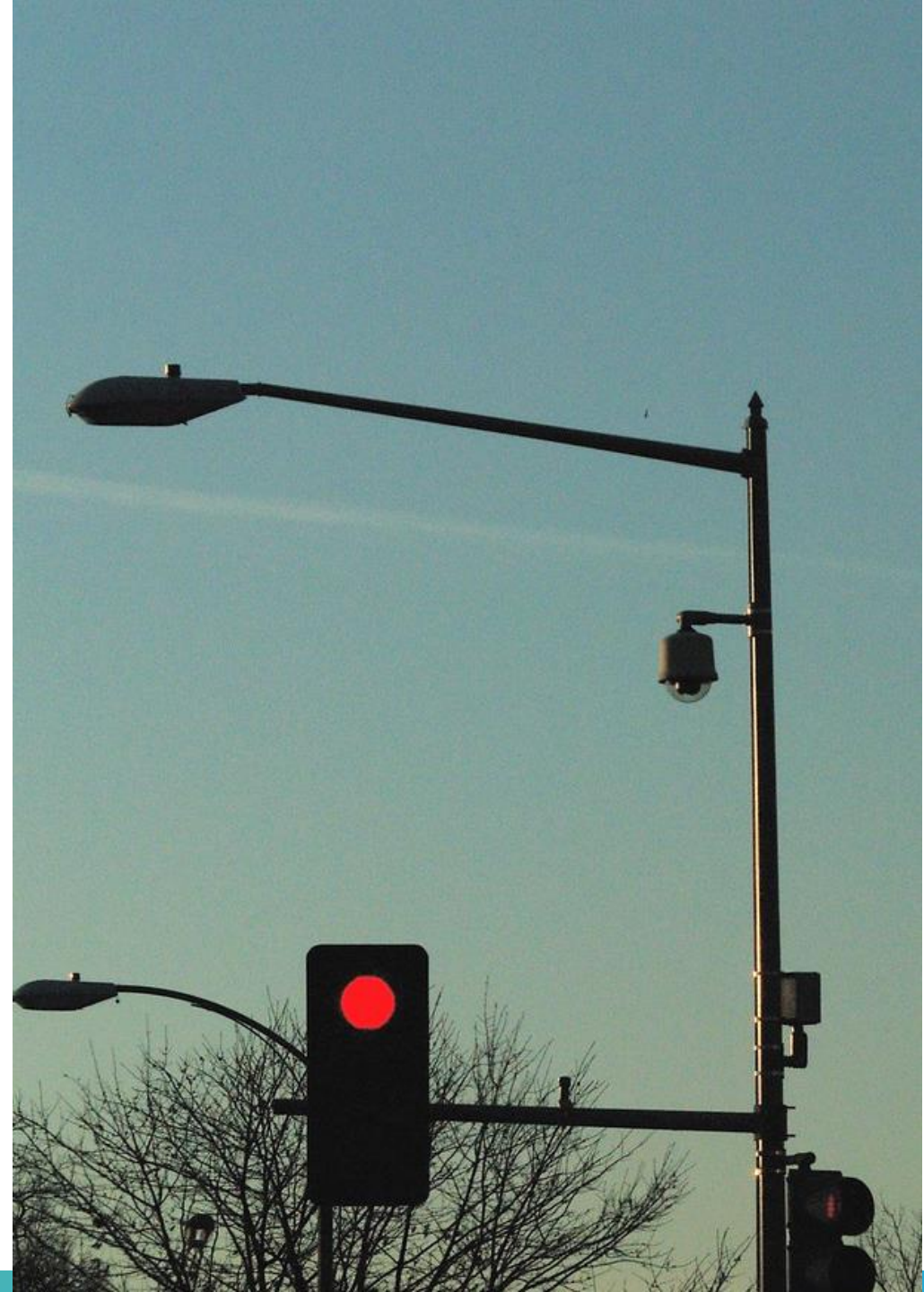


LED Streetlight Conversion

Lower Energy Costs, Improve Public Spaces

- Reduce electricity consumption or tariff rate
- Reduce maintenance and outages
- Improve visibility and safety of corridors

0% Match – Rebate covers 100% materials and labor costs



Technical Assistance from Grants Team

Metroplan Helps You Succeed

- Project scoping
- Energy bill review
- Site selection assistance
- Charger siting with Suitability Analysis Tool
- Procurement guidance
- Reporting templates and support
- Training



Reporting Requirements

- Energy or Fuel Baseline
 - Send fuel/mileage logs for vehicles
 - Send energy bills for lights
- Quarterly Reports through 2029
 - Report EV mileage & kWh usage
 - Report Charger kWh dispensed
 - Report \$/kWh for public chargers
 - Send energy bills for lights



Contact the Grants Team for Questions

Grant Administrator

Leesa Freasier

Lfreasier@metroplan.org

501-859-3833

Sustainable Transportation & Energy Ambassador

Brittany Nichols

Bnichols@metroplan.org

501-379-1113



METROPLAN

SMART PLANNING MAKES SMART PLACES.